

HOUSES[®]

Kitchens + Bathrooms



ON THE
BRIGHT SIDE

*Joyful kitchens and bathrooms
by Australia's leading designers*

ISSUE 19

\$14.95



9 771833 524001 03

Timber veneers to elevate
the living experience.

Eveneer Raw Cumulus by Elton Group
Design Finnis Architecture & Interiors Photo Damien Kook

A modern kitchen interior featuring a curved wooden cabinet with a light oak finish. The cabinet has a curved top and a curved front. A stone countertop with a grey and white pattern is mounted on the cabinet. A stainless steel faucet is installed in the countertop. The background shows a dark wooden cabinet and a white ceiling with two recessed lights.

Eveneer®

ELTONGROUP
Authentic. Innovative. Sustainable.



Refined by design

Phoenix creates bathroom and kitchen fittings through refined Australian design. For over 30 years, we've been trusted to deliver innovation, precision and quality in every product – designed in house and made with pride – for a timeless experience in the home.

Featuring products from our Ormond Shower Collection with LuxeXP™ shower spray technology, Vivid Slimline Plus tapware, Vivid Slimline Floor Mounted Bath Mixer with Hand Shower and our new Heated Towel Rails, all in our Brushed Carbon finish

— phoenixtapware.com.au



Scan here to
find out more

Contents



Page 58

Welcome

A note from the editor 6

Products

Home for dinner

Finishing touches and must-have appliances that refine the at-home cooking and dining experience. 9

A fresh take

Familiar yet exceptional, this collection of bathroom products elevates everyday rituals. 13

Inspiration

Design delicacies

A collection of kitchens that cater to the individual lifestyles of the household. 17

Elements of surprise

These cleverly planned bathroom designs turn functional spaces into memorable retreats. 23

Homes

Peachy keen Punchy colour and playful architectural references catalyse the revival of a 1990s suburban house. *Wowowa Architecture and Interiors* 28

Better, not bigger Subtle and surgical adjustments add functionality and delight to a cherished Brisbane home. *Kieron Gait Architects* 36

Elegant sufficiency An astutely reconfigured Art Deco apartment in Sydney masters the art of small-scale living. *Woodward Architects* 44

Seaside sanctuary Perched above Copacabana Beach, this holiday house welcomes guests into the heart of the kitchen. *Polly Harbison Design* 58

Pitch perfect A new home for five prioritizes northern aspect to immerse the interiors in light and landscape. *Weaver and Co Architects* 66

Bijou beauty Rich materiality and refined detailing enhance space and experience in this sandstone cottage in Sydney. *Room on Fire* 74

A different beat In this Brisbane home, unconventional thinking anchors living spaces around a decadent kitchen. *Maytree Studios* 88

Hidden haven A once-dark Melbourne terrace is transformed into a serene and secluded private realm. *Fowler and Ward* 96

Timeless textures Muted tones and tactile materiality transform a narrow Sydney dwelling for a growing family. *CM Studio* 104

Cabinet of curiosities In Melbourne's Fairlie Flats, this apartment is reborn with sophisticated texture and colour. *Kennedy Nolan* 112

On solid ground The interior of this Melbourne home is graced with earthy materials and foliage-fringed courtyards. *Robson Rak Architects* 122

Extending legacy Longevity and soft luxury lead the design decisions of an update to a much-loved Adelaide home. *Williams Burton Leopardi* 130

In focus

Dreaming of Venice *Oliveri* 11

A big solution for a small home *Saniflo* 12

Dependability and precision *Sub-Zero Wolf* 52

Finding the perfect fit *The English Tapware Company* 54

Soft geometry: Presenting the Ona collection *Roca* 56

Reimagining pocket systems *Blum* 82

The epitome of modern tapware *Vola* 84

All in one: Liebherr's integrated fridge and freezer *Liebherr* 86

Supplier index 138

Welcome



We often talk about the kitchen and bathroom as the engine rooms of the home, but these hardworking spaces are far from utilitarian: the kitchen can be a place for work and friendly conversation just as often as it is a place for preparing meals; in essence, the bathroom is used for bathing, but it might also be a place to recalibrate after a busy day. These zones should be both functional and delightful: well-planned rooms enhanced by details that help us feel “at home.”

With a diversity of scales and budgets, the homes in this issue of *Houses: Kitchens and Bathrooms* reveal how architects and designers respond to clients' briefs and personalities to instill their residences with joy, composure and restorative connections to others. This includes nurturing calm and clutter-free living in a small-scale apartment (Grantham Apartment by Woodward Architects, page 44); achieving abundant natural light and volume in previously dark terraces (The Cottage by Room on Fire, page 74; Barkly Street House by Fowler and Ward, page 96); and creating a welcoming home embedded in the garden for a couple who love entertaining (Same Same But Different by Maytree Studios, page 88).

On the cover is Espy by Wowowa Architecture and Interiors (page 28). Brimming with vitality, this renovation delights in the chance to cherish – and replenish – a 1990s house in suburban Melbourne. The home's decadent palette of rich berry and peachy cream hues reveals more than just a love for zesty colour: it also signals Wowowa's appetite for celebrating every era of Australia's suburban housing.

We hope you enjoy delving into the details of all of the homes visited in this issue.

Alexa Kempton



Write to us
houses@archmedia.com.au

Subscribe
Print: architecturemedia.com/store
Newsletter: architectureau.com/newsletters_list

Find us
[@housesmagazine](https://www.instagram.com/housesmagazine)



Editor
Alexa Kempton

Editorial enquiries
Alexa Kempton
T: +61 3 8699 1000
houses@archmedia.com.au

Editorial director
Katelin Butler
Associate editor
Georgia Birks

Editorial team
Nicci Dodanwela
Jude Ellison

Production
Goran Rupena
Design
Janine Wurfel
janine@studiometrik.com

Advertising enquiries
All states
advertising@archmedia.com.au
+61 3 8699 1000

Print management
KHL Print
Distribution
Australia:
Are Direct (newsagents)
International:
Eight Point Distribution

CEO/Publisher
Jacinta Reedy
Company secretary
Ian Close
General manager
operations
Jane Wheeler
General manager
digital publishing
Mark Scruby
General manager
sales
Michael Pollard



Published by
Architecture Media Pty Ltd
ACN 008 626 686
Level 6, 163 Eastern Road
South Melbourne
Vic 3205 Australia
T: +61 3 8699 1000
publisher@archmedia.com.au
architecturemedia.com

Endorsed by
The Australian Institute of
Architects and the Design
Institute of Australia.



DOA
Design Institute of Australia

Member
Circulations Audit Board



Subscriptions
architecturemedia.com/store
subscribe@archmedia.com.au
or contact the
publisher above

ISSN 1833-5241

Cover:
Espy by Wowowa
Architecture and
Interiors. Sculpture:
Volta. Photograph:
Martina Gemmola.

Copyright: HOUSES® is a
trademark of Architecture
Media Pty Ltd. All designs
and plans in this publication
are copyright and are the
property of the architects
and designers concerned.



MAXIMUM MINIMALISM

Linear Drainage by Stormtech



Stormtech

®

ARCHITECTURAL **Grates + Drains**

Visit stormtech.com.au
or call **1300 653 403**



Designed and manufactured in Australia, Stormtech linear drainage delivers style and sustainability with a contemporary range of award winning designs and colour finishes featuring both Greentag and Watermark certification.

View our complete selection on the Stormtech website,
and match the perfect drain to your design vision.

SHOWERS + BATHROOMS + BALCONIES + COURTYARDS + POOL SURROUNDS + COMMERCIAL





Preserve masterfully. Cook precisely. *Live deliciously.*

Savour the ingredients that stay fresher longer with Sub-Zero, the food and wine preservation specialist, the meals that are cooked to masterful precision with Wolf, the cooking specialist, and a kitchen appointed with elegantly crafted appliances.

Newly refined, inside and out, explore the Sub-Zero Wolf design possibilities.



Refrigeration. Cooking.

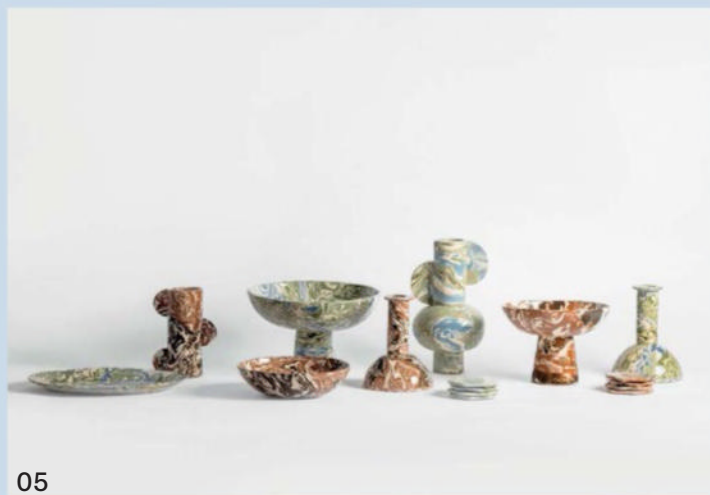
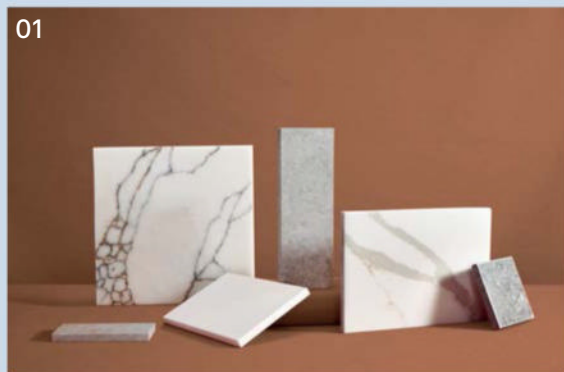
subzero-wolf.com.au

SHOWROOMS: MELBOURNE, Bank House. 11-19 Bank Place, Melbourne. SYDNEY, Foveaux House. 63 Foveaux Street, Surry Hills.

Home for dinner

From benchtops to joinery pulls, these final touches and appliance must-haves will elevate the at-home cooking and dining experience.

Find more residential products:
selector.com and productnews.com.au



01 SilkSurface benchtops

Verified by University of Adelaide researchers, the SilkSurface benchtops are a silica-free alternative to engineered stone. As well as being durable, stain resistant and easy to clean, the countertop can be quickly installed so home chefs can cook up a storm in no time. silksurface.com.au

04 Wolf induction range

For the serious home cooks, the Wolf induction range pairs a ceramic glass cooktop with a 10-mode Dual VertiFlow convection electric oven. Available in widths of 76 centimetres or 91 centimetres, the range's sleek stainless steel form is fit for any kitchen design. subzero-wolf.com

02 First Nations woven lighting

Made in collaboration with 14 Indigenous art centres, this lighting collection celebrates Indigenous fibre arts in Australia. Each piece is meticulously handwoven with locally sourced materials, reflecting a profound connection to the land and traditional techniques. koskela.com.au

05 Henry Holland ceramics

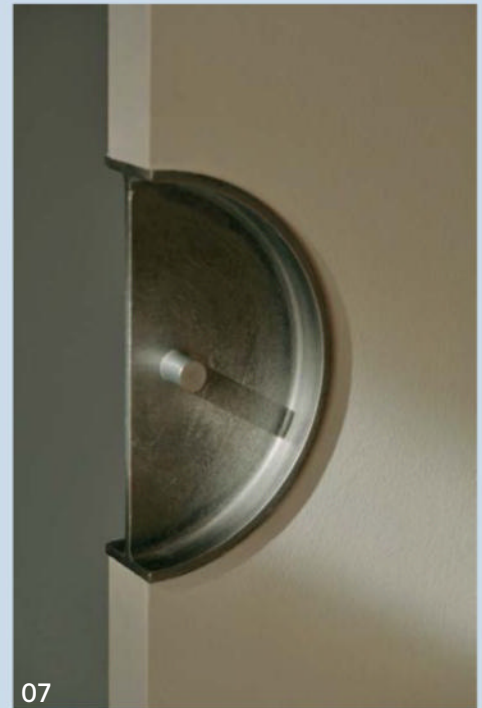
Henry Holland Studio's ceramic range uses *Nerikomi*, a traditional Japanese technique, to combine coloured clays. The geometry of the vases, bowls and candle holders is inspired by Memphis Milano, art deco and modernist eras of design. Available in Australia through Jardan. jardan.com.au

03 Zip's all-in-one pull-out tap

The Zip HydroTap Celsius Plus All-In-One Pull-Out was developed in response to consumer demand. At the press of a button, the tap switches between instant filtered boiling, chilled or sparkling drinking water while extending and retracting into place. zipwater.com



06



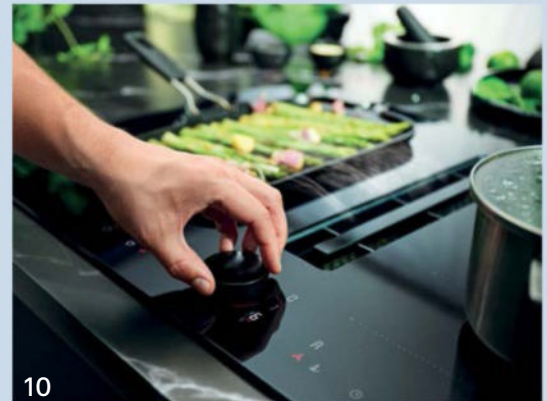
07



08



09



10

06 Liebherr's integrated refrigerator

The Liebherr IRBPh5170 integrated refrigerator harmonizes efficiency and style. The design incorporates OpenStage drawers, an innovative design that ensures produce is visible and easily accessible, and BioFresh technology that preserves fresh food for longer.

liebherr.com

07 Cast by Bankston and Edition Office

Minimal and robust, this collection of door handles and joinery pulls features geometric forms and tactile surfaces. An artisanal sandcasting technique is used, with each piece available in raw aluminium, bronze or a patinated bronze finish.

bankstonarchitectural.com

08 Strong Haven

Developed in collaboration with Nexus Designs, Strong Haven is a colour palette inspired by the unique qualities of rammed earth and natural woodgrain. Combining warm mid-tones with a textured finish means the colours add softness to hard architectural spaces.

haymespaint.com.au

09 Tongue and Groove boards

Tongue and Groove has launched its most popular timber board formats – Grande and Piccolo – in a 2.9-metre length for a seamless finish. The length is purposefully designed to clad expansive surfaces with minimal join lines, creating a sleek and impactful result.

tongueandgroove.com.au

10 NEFF Flex Design range

Available for ovens, induction cooktops, rangehoods and coffee machines, these new handles, side trims and control dials are easily customizable in Deep Black, Anthracite Grey, Metallic Silver or Brushed Bronze to cohesively complement a variety of kitchen designs.

neff.com.au

IN FOCUS

Dreaming of Venice

Oliveri's newest tapware range, Venice, caters to the myriad individual preferences of kitchen design and function.



Designed to elevate any kitchen space, Venice is a graceful, flowing mixer crafted with smooth, rounded contours and elegant lines.

The Venice range is available in a variety of styles to suit every preference. Whether you prefer the classic allure of a gooseneck design, the modern appeal of a right-angle mixer, or the versatility of an upright swivel model, Oliveri has something to cater to your individual taste.

Additionally, the range offers both regular and pull-out hose models, providing convenience and flexibility for your kitchen requirements.

Constructed from premium materials such as solid brass and zinc castings, the Venice range is built to last. Oliveri mixers are engineered for durability, ensuring they withstand the rigours of daily use while maintaining their impeccable appearance.

Available in popular finishes including Polished Chrome, Brushed Nickel, and Matte Black, these mixers can effortlessly integrate into any kitchen design, adding a touch of sophistication to the heart of the home.

With the new Venice range, Oliveri invites you to elevate your everyday with style, functionality, and sustainability – because your kitchen deserves nothing less than the best. OLIVERI.

01 Venice range kitchen mixers have regular or pull-out hose model options.

Oliveri

For more information on Oliveri:
oliveri.com.au

A big solution for a small home

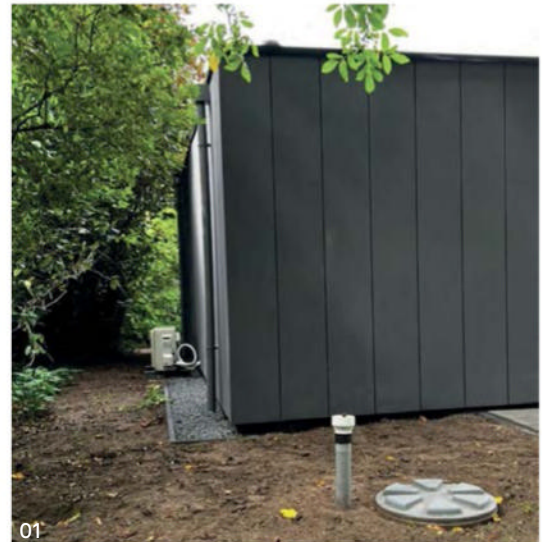
Tiny homes and granny flats are becoming increasingly popular, and they are a great way to ease the nation's housing crisis. However, to comply with relevant building standards, granny flats and tiny homes must have plumbing amenities (including kitchen and bathroom facilities). That can be a challenge because these residences are often built lower than adjacent street-level homes.

A Saniflo client recently had this issue with their tiny home build. The site was far from the road and below its drainage. To provide plumbing for this home, the Sanifos 280 GR was the perfect solution: an in-ground lifting station ideal for granny flats and tiny homes. It takes the wastewater from all plumbing fixtures within a residence (such as the sink, toilet, shower and laundry) and then pumps the waste below ground and out to the street drainage. The product's 280 L tank created adequate capacity for the unit's waste, allowing for increased wet-area design flexibility.

"When specifying the right drainage product for a complete small residential setting, the Sanifos 280 covers all bases," said Ollie Benstead, technical officer at SFA Australia/New Zealand.

Benstead added that the product's inbuilt storage capacity and included alarm system not only gave designers and installers flexibility in choosing connection heights, it also gave them peace of mind. SANIFLO.

Sanifos 280 GR is a discrete in-ground solution to achieve compliant plumbing in small-footprint dwellings.



01 Sanifos 280 GR is activated via a float switch, which turns on a powerful grinder pump.

02 The Sanifos 280 GR includes adequate storage capacity and an alarm system.

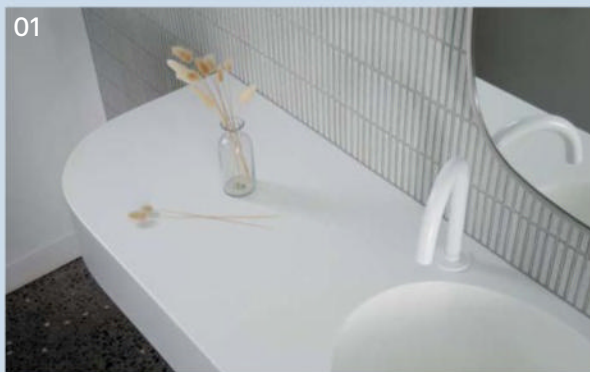


For more information on Saniflo:
saniflo.com.au

A fresh take

Simultaneously familiar and exceptional, this collection of bathroom products elevates everyday rituals.

Find more residential products:
selector.com and productnews.com.au



01 Staron solid surfaces

The Staron solid surface range is a silica-free alternative to engineered stone. Created through a blended composition of mineral and resin, the material can be customized to integrate draining grooves or Staron sinks for a smooth, seamless bathroom vanity.
austaronsurfaces.com

04 Vola tapware

Since introducing coloured tapware in 1970, Vola now has tapware available in 28 colours, including pink (pictured, HV1 mixer). Along with its commitment to colour, Vola is committed to longevity. Replacement parts are available for every product the company has ever made.
vola.com

02 TAFLA C mirror

Metal material is pumped with air to achieve the three-dimensional form of this mirror, which is conceived as an avant-garde interpretation of a drop of water. Its bubble-like edges transform the mirror into a sculptural object, adding a touch of art to the interior of any bathroom.
zieta.pl

05 Contura II

The Caroma Contura collection is all about simple luxuries. Soft, organic forms characterize the designs of the bath, basins and tapware. Fixtures are available in matt white or matt clay, while tapware and accessories are available in chrome or matt black.
gwagroup.com.au

03 Roma basin

Playful, hard-wearing and functional, this eye-catching piece integrates basin, splashback, toothbrush shelf and drawer into one powdercoated aluminium piece. Roma is made to order and can be customized with any Dulux colour to suit myriad bathroom designs.
cleanclean.co.nz

06 Aquariva showerhead

Coming in two sizes and 12 finishes, this oversized showerhead transforms the bathroom into a health spa experience. The Aquariva offers a range of high-tech water and lighting settings including rain, nebulisation, waterfall and chromotherapy.
pacojaanson.com.au



07



08



09



10



11

07 Port light from Rakumba

Designed by Tom Fereday, Port is a refined lighting design that celebrates the refractive properties of crystal glass. The stepped, pyramidal form can be reversed for two distinct sculptural effects. Port is available as a round or stadium profile, and as a wall or table lamp. rakumba.com.au

10 Neolith Zaha stone

Inspired by Turkish marble, the Neolith Zaha stone is grey with distinctive white veins. It is versatile in its application and can be used in both bathrooms and kitchens. This natural stone is low maintenance and resistant to heat, stains and UV radiation. neolith.com

08 Cotto Manetti terracotta

The terracotta tiles of Cotto Manetti can be applied internally and externally as wall or floor tiles to blur the lines between indoor and outdoor living. The ancient material is made contemporary through matt finishes, colour variation and modern proportions. artedomus.com

11 Terzofoco basin from Oliveri

Made by hand in Italy, the Terzofoco basin is a utilitarian object of art: a practical and beautiful feature for the bathroom. Best suited to counter-top installation and wall-mounted tapware, the collection is available in a range of colours and finishes (pictured: Red Clay). oliveri.com.au

09 Vertical robe warmers by The English Tapware Company

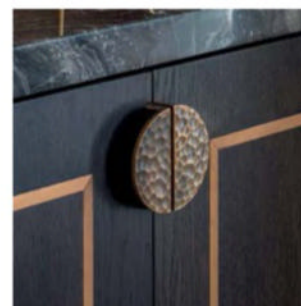
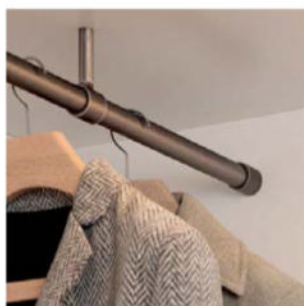
Hawthorn Hill vertical rails ensure luxuriously heated robes can be installed even in bathrooms with tight wall spaces. Supplied in single rails, the range comprises three warmer styles: Ornate, Traditional and Contemporary. englishtapware.com.au

THE ENGLISH TAPWARE COMPANY

KITCHEN • BATHROOM • HARDWARE



BEAUMARIS HOUSE BY MELISSA BALZAN FEATURING OBERON TAP FROM PERRIN & ROWE, 'SEATTLE GREY' ROCKWELL BATH FROM THE WATER MONOPOLY, HANGING RAILS & CABINET HARDWARE FROM JOSEPH GILES, HANDWOVEN GRILLES FROM OXFORD GRILLES



PERRIN & ROWE
LONDON

JOSEPH GILES

ACQUELLO
ITALIA
l'arte della terra

THE
WATER/
MONOPOLY

OXFORD
DECORATIVE GRILLES

AQUADOMO

Hawthorn Hill
Luxury Detailing

AUSTRALIA The English Tapware Company • 751 High Street, Armadale, Melbourne • VIC: 03 9818 1403
170 Queen Street, Woollahra, Sydney • NSW: 02 9362 4736 • @theenglishtapwarecompany • ENGLISHTAPWARE.COM.AU

NEW ZEALAND In Residence • 219 Great South Road, Greenlane, Auckland
NZ: 09 309 3023 • @inresidencenz • INRES.CO.NZ

The Ultimate Indulgence

Premium fully integrated appliances.
Discover the latest at
home.liebherr.com.au

LIEBHERR

Refrigeration and freezing



Design delicacies

KITCHEN INSPIRATION

Feast your eyes on this collection of kitchens designed for beauty, practicality and longevity.

01 Von Leach Residence by Amelda Wilde Interior Design

A Californian bungalow with a century's worth of patina and scars, this house is home to a family that loved it at first sight. The brief to design its interior was therefore guided by a desire to preserve and amplify its authentic charm, atmosphere and character. Using strategic contrasts across colour, light, material and proportion, interventions embrace imperfection to craft a kitchen meant for long-term, robust family use. Arts and Crafts ideals of creating and curating pieces to pass down through generations are, literally, built into the design; the stone splashback and floating overhead exhaust fan are both unique and durable. Owner Matthew Leach of Von Steel fabricated the portal frame, subfloor, stainless steel cabinetry and other elements on site. Although the kitchen's steel elements seem minimalist, their imperfect silver finish was hand-brushed so that, like the well-loved existing floor and skirting boards, it will develop beautiful blemishes inflicted by family life.

ameldawilde.com.au

Location: Wadawurrung Country, Djilang/Geelong

Artwork: Steve Salo

Photography: Cricket Saleh





02 Olive Tree House by Bastian Architecture
 Measured by footprint, both Olive Tree House and its site are half the Australian average. Designed to challenge housing norms, this home and its compact kitchen uses clever planning and rich materials to support full-sized quality of life. Earth tones in terracotta tile, orange laminate, timber trim and plywood lining complement and visually connect with the home's external landscape. Dark grey joinery conceals everyday appliances stored on the benchtop – a solution that is practical as well as tidy – while cookbooks are on display for mealtime inspiration. These design choices emphasize that this home is made to be lived in; its beauty withstands the scuff marks of a well-lived life.

bastianarchitecture.com

Location: Awabakal and Worimi Country, Mulubinba/Newcastle

Photography: Justin Aaron Studio

03 Esca Inman Valley by Das Studio

This project for nature-based tourism operator Esca comprises twin off-grid units on South Australia's Mount Alma. A response to the surrounding Spring Mount Conservation Park landscape, the material palette foregrounds tactility, robustness and comfort. Hand-chipped granite benchtops and patinated brass tapware mimic the speckles of oxidization on nearby rock formations, and ebony-finished cabinetry evokes charred bark in neighbouring bushfire-affected forests. Rustic oak floorboards envelop the interior with a tonally warm embrace that also protects the exposed site from the elements.

das-studio.com.au

Location: Kaurua, Ngarrindjeri and Permangk Country, Inman Valley

Photography: Anthony Basheer





04 Kangaroo Point House by Nielsen Jenkins

Balancing refuge and exposure in a tight inner-city context, this design connects interior and garden via a two-storey void. The kitchen can be fully opened to exterior living spaces, creating a generous hub from which the client entertains guests and, on game days, shares in the joyful excitement of pedestrians passing by en route to the Gabba. Batten window screens keep home (and house cats) secure while letting ventilation and dappled light travel deep into the plan.

nielsenjenkins.com

Location: Turrbal and Jagera Country, Meanjin/Brisbane

Photography: Shantanu Starick

05, 06 Kirribilli Downsize Apartment

by Tsai Design

This 1920s apartment in Kirribilli was renovated for a downsizing couple adapting to the next phase of life. The brief: custom adjustments to support the couple's new lifestyle and enhance the apartment's environmental responsiveness. Bold layout moves from Tsai Design addressed both these criteria by eliminating the walls separating dining, kitchen and corridors to create one continuous space where the couple can entertain family and friends. In this welcoming and sunlit open plan, a custom feature – a striking plywood-and-marble bench – further blurs lines between spaces by extending into the bathroom, where it seamlessly becomes a vanity.

tsaidesign.com.au

Location: Gadigal Country, Warrane/Sydney

Photography: Clinton Weaver

05



06





07 Tomich House by Mark Jeavons Architect with Ohlo Studio

Completed in 1971, Tomich House is one of Iwan Iwanoff's most distinctive homes. Thorough research into Iwanoff's oeuvre guided this comprehensive restoration, which revitalized the house's original character with thoughtful replanning. The design team selected finishes, fittings, joinery and details that are sympathetic to Iwanoff's style and don't interfere with the nuanced architectural shell. In the kitchen, crisply structured storage has been tucked behind the cooktop, while a similarly angular bench draws the eye with an unusual asymmetric profile. New materials (such as the Japanese tiles and salvaged jarrah flooring) and volumes (such as the cabinetry) were chosen for their connections with the origins and formats of Iwanoff's original designs.

Mark Jeavons Architect with Ohlo Studio
ohlostudio.com

Location: Whadjuk Noongar Country, Boorloo/Perth
Photography: Jack Lovel

08 Park Street by Breathe Architecture

As part of a light-touch retrofit completed for developer Milieu, Breathe brightened this six-pack apartment block's newly sustainable kitchens with a joyful material palette. Laminex joinery, cork floors, mosaic tiles and walnut-stained timber were selected for their environmental qualities and for their nostalgic feel, embracing both the building's original charm and its lower-carbon present. Efficient induction cooktops, appliances and lighting round out the reimagined kitchens. The results of these minimalist interventions not only honour Park Street's heritage, but also divert construction waste from landfill and discourage excess consumption.

breathe.com.au

Location: Wurundjeri Country,
 Naarm/Melbourne
Photography: Ben Moynihan



The Original In-Wash®

In-Wash® Inspira In-Tank®



A space-saving design with the cistern integrated in the pan.
This pioneering smart toilet with innovative, consumer-focused solutions for the perfect daily bathroom experience features Roca's signature In-Tank® technology.

roca.com/in-wash-inspira

Roca

Elements of surprise

BATHROOM INSPIRATION

In this collection of bathrooms, cleverly coordinated storage, ingenious planning and restorative outdoor connections make for memorable retreats.

01 Garden Lane Residence by Oliver Du Puy

To design a home with both vibrancy and tranquility, Oliver Du Puy sought inspiration in the domestic work of Japanese architect Kazuo Shinohara and the colour field paintings of artist Mark Rothko. In Oliver's design, simplicity and surprise blend to form an orderly yet unexpected interior. In the powder room, finishes comprise a custom mustard-tone Farrow and Ball paint and a bespoke sculptural Calacatta marble basin nestled symmetrically between two bronze-accented, peach-toned storage spaces. Outside, a green vista beyond adds to the enchanting calm of a room in which the balance of proportion, material and light yields luxury of spirit.

oliverdupuy.com

*Location: Wurundjeri Country,
Naarm/Melbourne*

Photography: Tom Ross



01



02

02 Shadow House by Grotto Studio

This cosy retreat blends warmth and simplicity. Its jarrah timber-decking shower floor and earthy red wall tiles, which also wrap the built-in bath, create a richly comforting atmosphere. To offset the room's narrow footprint, a generous mirror and east-facing window welcome morning light and offer views of the garden. Reclaimed weatherboards showcase the house's original structure in a thoughtful design that makes the bathroom not just a functional space but also a peaceful sanctuary that is attuned with the environmentally conscious, historically respectful ethos of this home.

grotto.studio

Location: Whadjuk Noongar Country, Boorloo/Perth

Photography: Jack Lovel

03 East Melbourne Residence by Hecker Guthrie

In the main ensuite of this 1864 Victorian home, a streamlined floor tap services an eye-catching standalone basin: Agape's Bjhon 1, which Angelo Mangiarotti originally designed for Cappellini in 1970 as a glazed ceramic planter. Custom cabinetry conceals multiple mirrors and, being wall-mounted, appears to float above the Selenis marble floors. A Davide Groppi pendant and a large window ensure that this thoughtfully assembled ensuite can be easily filled with light.

heckerguthrie.com

Location: Wurundjeri Country,

Naarm/Melbourne

Photography: Shannon McGrath



03



04



05

04, 05 Castlecrag Courtyard by Downie North

Inspired by the utopian spirit of bushland suburbs, Downie North's design for this home in Castlecrag draws from relationships with the landscape to create a house made to last for generations. The plan has been organized around a north-facing courtyard to embrace the expansive endemic garden. This move yields sun-filled, passively ventilated interiors that afford both views and privacy; in the bathrooms, a built-in window seat and an L-shaped vanity make the most of these advantages. A material palette comprising terrazzo, Japanese ceramic, stone, timber, brick and concrete infuses nature-inspired colour: sandstone's speckled cream, brown and gold; angophora bark's grey and red; and the harbour's murky green. Together, they heighten the experience of living within a landscape where shelter, refuge and prospect are paramount.

downienorth.com

Location: Cammeraygal Country, Warrane/Sydney

Photography: Clinton Weaver

06 Garden Wall House by Sonelo Architects

Asked to update a poky bathroom and windowless toilet as part of a larger alteration and addition project, Sonelo Architects responded with a design that physically and visually connects the home to nature. The bathroom and toilet were consolidated to yield a good-sized space with improved access to desirable daylight. To amplify the newly expansive feel, shower and bath privacy was achieved not with screens but rather with a skinny mirror that spans from ceiling to vanity. This unit anchors the concentric layout, and its green-toned cabinetry and terrazzo benchtop abstract the tones and textures encountered in the garden.

sonelo.com.au

Location: Wurundjeri Country,

Naarm/Melbourne

Photography: Pier Carthew



07 Patrick Street by Andrew Campbell and Georgina Russell

The brief for the update to this heritage-listed terrace required a program that could be contained within the existing envelope, prompting a series of discreet moves to unlock the plan and provide broad functional amenity – while seeming to change as little as possible. Situated like a building-in-miniature within a heritage bedroom, the bathroom is distributed around the periphery so that bathing, washing hands or clothes, and toileting are autonomous from neighbouring functions. Adherence to the brief can be seen throughout, including in the respectfully curtailed shower walls that stop short of the ceiling. The insertion's cool terrazzo tones are warmed by timber trims, adopting the playful and tectonic language of furniture – and, like furniture, the new work can be removed later to restore the room's original use.

Location: mouheneenner Country, nipaluna/Hobart

Photography: Adam Gibson



08

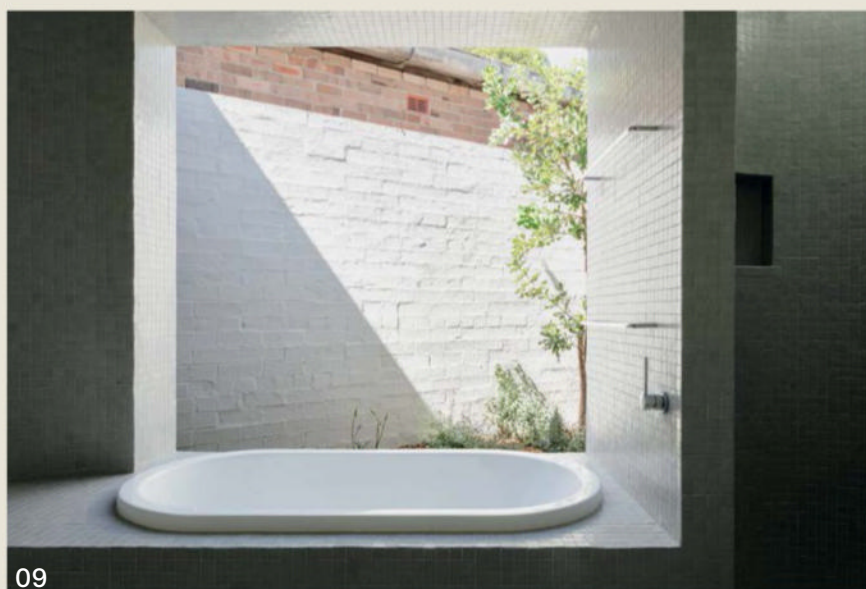
**08, 09 Newtown House
by Anthony Gill Architects**

Newtown House is a modest single-storey addition to an existing semi. The two front rooms are retained as bedrooms with minimal changes, while a new rear addition accommodates the bathroom, kitchen, dining and living zones. Tucked beneath an angular roof, the bathroom is itself triangular and has been positioned in the centre of the plan. This move allows for connection with landscape: a north-facing central garden with large openings to both bathroom and kitchen. Such a connection is initially challenging in terms of privacy; the design relies on the garden growing so that, over time, it provides a crucial filter between the rooms.

gillarchitects.com.au

Location: Gadigal Country, Warrane/Sydney

Photography: Clinton Weaver



09



Peachy keen

WOWOWA ARCHITECTURE
AND INTERIORS



Punchy colour and playful architectural references are the potent ingredients in this revival of a 1990s home in suburban Melbourne.

Words by Judith Abell
Photography by Martina Gemmola

For a project that adds only a new entry vestibule with bike store to this nineties design, Espy House by Wowowa Architecture and Interiors punches far above its weight. The existing home, inspired by one of Glenn Murcutt's coastal houses, has a split personality.

At the front, it sits within the frame of a typical suburban street, but halfway down the block, the site plunges more than 20 metres down to the Maribyrnong River, which winds through the north-western suburbs of Melbourne.

The team at Wowowa was tickled by this little tribute to Murcutt in a suburban context and thought they'd bring a touch of Melbourne nineties to the facade via some Edmond-and-Corrigan-esque shape and colour.

Picking up on existing hues within the house, particularly a rich maroon, the Wowowa team has added what they describe as a "blush-coloured, neo po-mo nugget" to the front, fulfilling the bike storage brief while also offering a protected moment of arrival for occupants and visitors.

The remaining work – in particular the kitchen and bathroom – continues this play of colour and style, but with clever, minimal changes, to create what feels like a new home, but with no structural change or increases to internal floor area.

The location of the kitchen and much of its joinery remains the same, but the architects have made a number of critical moves to shift the feel of the space. By lifting the ceiling to the underside of the roof, Wowowa has carved out space above, creating a more abundant feel.

New white tiles with high-contrast maroon grout deliver a punchy backdrop to existing joinery, and an island bench enables the space to be inhabited in a range of ways. Throughout, the architect has retained as much as possible, stitching in new work so that there is slight ambiguity as to whether each piece belongs to the original build or the new work.

This haziness is clear in the ensuite bathroom, which has had no work at all yet sits comfortably against the new work. The main bathroom has been renewed in a way that is robust and cost-effective, but it feels custom-made, with its deep green grout and coved splash against a brushed aluminium basin. The Wowowa team and I joke that it's like "luxury public toilet chic"!

The word "stretch" continually arises in reflections on this home, which takes existing languages and colours and stretches them into new, playful forms or combinations to offer a significant, yet economically modest, transformation of the house. ④



02



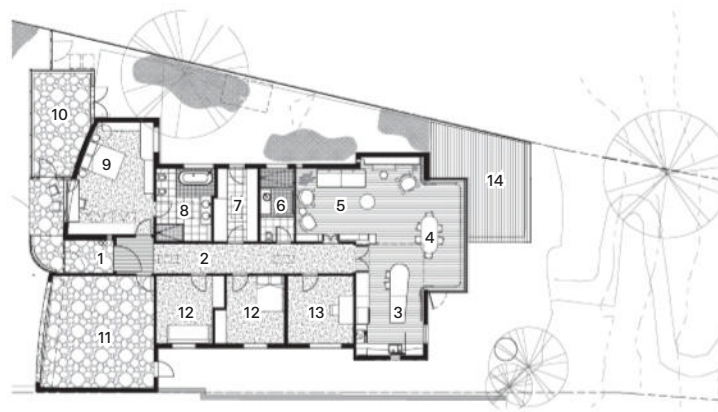
03

01 Lifted to reach the underside of the roof, the new ceiling crowns a voluminous, light-filled kitchen. Sculpture: Volta.

02 At the new entry, curved perforated metal panels direct visitors to pink-hued living spaces.

03 The island bench was positioned with flexible use in mind.

- | | |
|-----------------|-----------------------|
| 1 Entry | 9 Main bedroom |
| 2 Hallway | 10 Workshop and store |
| 3 Kitchen | 11 Carport |
| 4 Dining | 12 Bedroom |
| 5 Living | 13 Study |
| 6 Main bathroom | 14 Outdoor deck |
| 7 Laundry | |
| 8 Ensuite | |



Floor plan 1:400

0 5m →



04 The laminate benchtop curves to form the splashback, a cost-effective move with a luxurious feel.

05 No changes were needed in the ensuite because its colour scheme and layout suit the new design.

Bathroom products

Internal walls: Mosaic tile from Tiento with Mapei grout in '172 Space Blue'

Flooring: Metz 100 mm × 100 mm tiles in 'Kiwi'

Joinery: Brunswick benchtop and cupboards by Lamitak in 'Espalier'

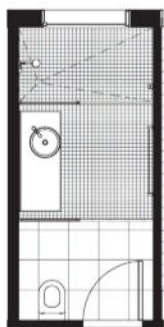
Lighting: Mino 1 wall light from Beacon Lighting

Tapware and fittings: Kado Lux 1,750 mm bath from Reece; Finley all-in-one shower set, Milani progressive mixer and Oscar floor-mounted bath filler in 'Brushed Nickel' and stainless steel Harlow round basin from ABI

Sanitaryware: Toilet from Reece

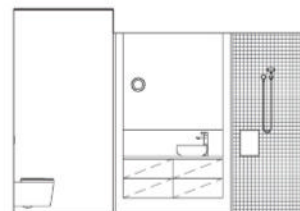
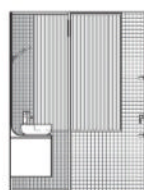


05

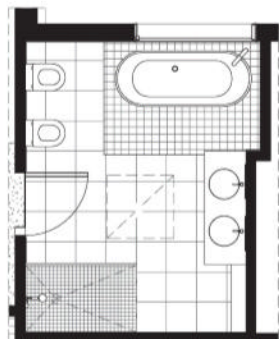


Bathroom plan 1:100

0 2m

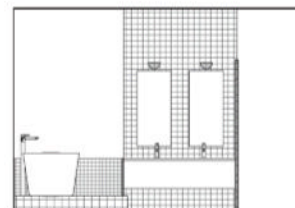
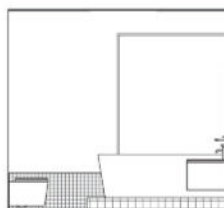


Bathroom elevations 1:100



Ensuite plan 1:100

0 2m

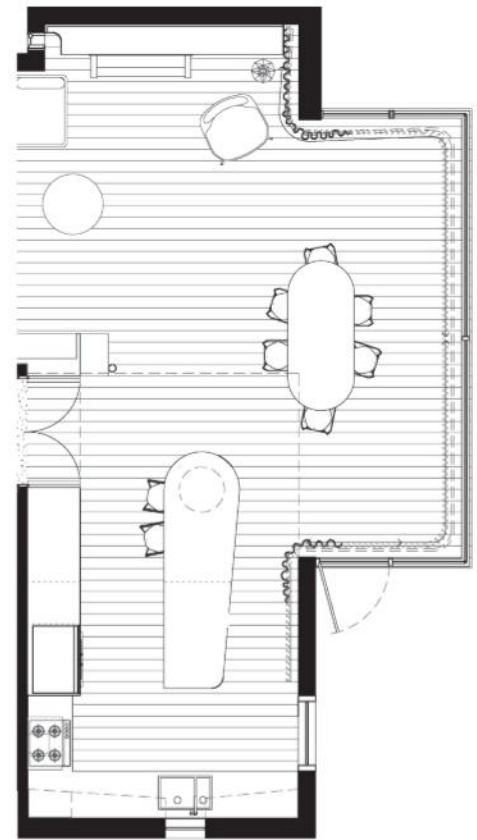


Ensuite elevations 1:100



06

06 Pink tones refresh existing joinery, while maroon grout makes new white tiles pop.



Kitchen plan 1:100



Kitchen products

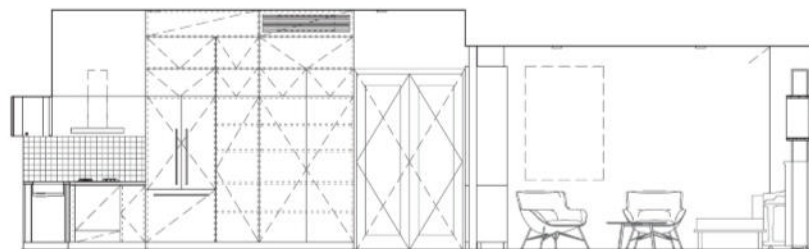
Internal walls: Mosaic tile splash-back from Tiento with Mapei grout in '145 Terracotta'; Dulux paint in 'Light Rice Quarter'

Joinery: Terrazzo slab island benchtop from Signorino in '991 Black and White'; Lamitak island benchtop and cupboards in 'Jazzberry' and 'Elodie'

Lighting: Disc pendants from Amonson Lighting

Sinks and tapware: Elysian mixer tap from ABI in 'Brushed Nickel'

Appliances: Stainless steel hob and rangehood by Smeg; oven by Fisher and Paykel



Kitchen elevation 1:100

Espy is built on the land of the Wurundjeri people.
Location Naarm/Melbourne, Vic

Architect
Wowowa Architecture and Interiors
+61 3 9416 2222
hello@wowowa.com.au
wowowa.com.au

Project team Monique Woodward, Jean Marie Spencer, Chaira Hunwick
Builder Belmont Build

vola®

The original: Since 1968

VOLA. For life.

Making life better since 1968

The first VOLA taps were designed by Arne Jacobsen for the Danmarks Nationalbank in 1968.

For over 50 years, the VOLA design has been globally admired by generations.

We manufacture all our products in Denmark. As part of our commitment to longevity, we supply spare parts for every product we have ever made.

VOLA 590H One-handle mixer with swivel spout, in the color green.

VOLA DESIGN PTY. LTD.

94 Wellington Street | VIC 3066 Collingwood | Phone: +61 402 372 480 | sales@vola.com.au

vola.com

Better, not bigger

KIERON GAIT ARCHITECTS





Subtle and surgical adjustments add functionality and delight to a cherished Brisbane residence, without extending or erasing the original home.

Words by Judith Abell

Photography by Christopher Frederick Jones

When new clients arrive with a written brief that states how much they love their house, you know you're off to a good start. This was the case for Kieron Gait Architects and this inner-southeast Brisbane house. The 1920s home had considerable character, but it lacked connections to the garden and pool. The internal service core was also cold and hard to clean. Without adding any internal floor area, and with minimal rearrangement of functions, the architect made a series of "surgical interventions" to make the home "better, not bigger." The key move was to reorganize the kitchen to allow for a large opening onto a newly formed outdoor room, offering a shady space within the garden, overlooking the pool. The remaining moves focus on the other service aspects of the home: a refurbished bathroom; and the creation of a separate powder room, a concealed laundry and a mudroom.

The shifts to the kitchen transform it into a gateway to the garden and a "control room" for the existing pool and new outdoor terrace. The sliding glass doors can be opened in different configurations depending on the weather or the entertaining event. A feature of this space is the natural stone benchtop, set against white joinery, terracotta tiles, brass kickboards and custom solid timber pulls. The crisp palette is countered with playful details and fittings, such as the fluted facing, the cloud-like cut-out to the ceiling bulkhead and a tiny, hidden stained-glass window that casts a wash of green down the wall – a tip of the hat to the pale-green-painted homes of the early twentieth century.

The bathroom is now warmer and more comfortable for this family of four, with heated tiles, a raised ceiling and a skylight. The character qualities of the home remain in the terrazzo and the detailing of the joinery, but the space feels contemporary. Equally, the tiny powder room holds the essence of the original home in its custom stone sink, which sits on a series of irregular brass "legs" that conceal its pipes while reading as a playful piece of furniture. The room is located to draw in light and air and to offer guests a little separation from the workings of the rest of the home.

Throughout each of these moments of renovation, the architect has carefully observed and then stretched the details of the existing home to keep those qualities their client loved, while building in new, contemporary functionality and delight. 🍷

01 Ceiling cut-outs and joinery patterns are expressions of the original detailing in the existing home.

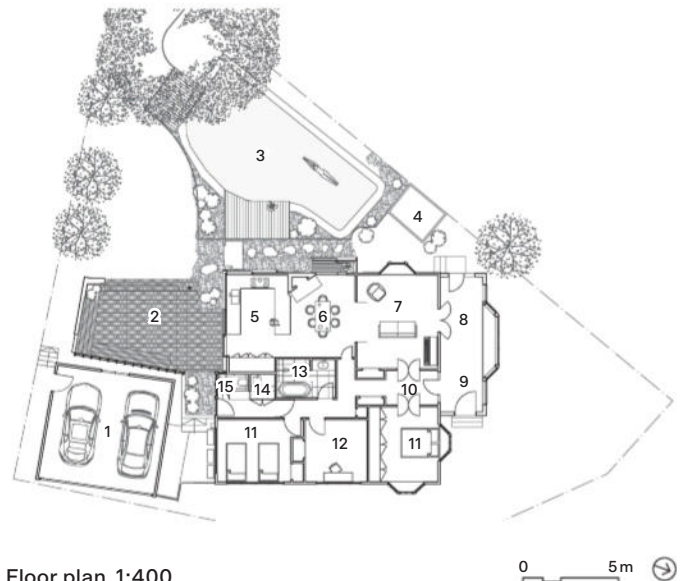
02 Used as benchtop, splashback and feature wall, natural stone is the hero of this material palette. Sculptures: Kristian Vedel.

03 Reconfiguring the kitchen enhanced its functionality and better connected the living areas. Artwork: Alexandra Pain.



03

- 1 Garage
- 2 Garden terrace
- 3 Pool
- 4 Existing pool shed
- 5 Kitchen
- 6 Dining
- 7 Living
- 8 Sunroom
- 9 Entry
- 10 Lobby
- 11 Bedroom
- 12 Study
- 13 Bathroom
- 14 Laundry
- 15 Powder room



Floor plan 1:400



04

Bathroom products

Internal walls: Vogue System glazed porcelain by Ceramica Vogue from Classic Ceramics in 'Ghiaccio'; terrazzo stone tiles by Fibonacci in 'Sunbreaker'; paint and finishes in Dulux 'Whisper White'; profiled pine detailing from Finlayson's

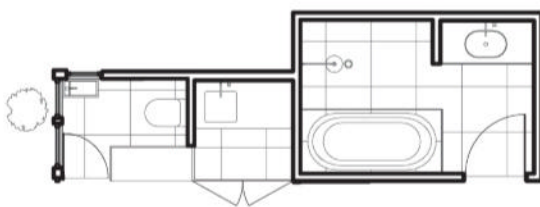
Flooring: Terrazzo stone tiles by Fibonacci in 'Sunbreaker'; existing and recycled pine boards sourced from local salvage yard and supplied by client

Joinery: 2-pac and natural brass details by T. Early and Sons; natural stone benchtop from Franca Design in 'Vagli'

Lighting: Brightgreen Curve recessed LEDs; batten holders from Edison Globes and Clipsal; pendant from Masson For Light

Tapware and fittings: City Stik tapware by Brodware from Elite Bathware and Tiles in 'Brushed Brass Organic'

Sanitaryware: Collaro Oval basin by Villeroy and Boch, Classic Duo Oval bath by Kaldewei, and Sigma 8 in-wall cistern by Geberit from Elite Bathware and Tiles; custom Saskia natural stone handbasin by Franca Design in 'Vagli'; Me toilet by Starck from Duravit



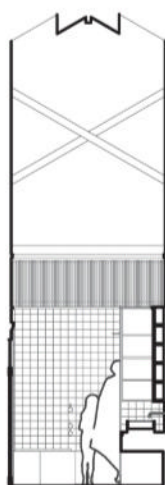
Powder room, laundry and bathroom plan 1:100

0 2m

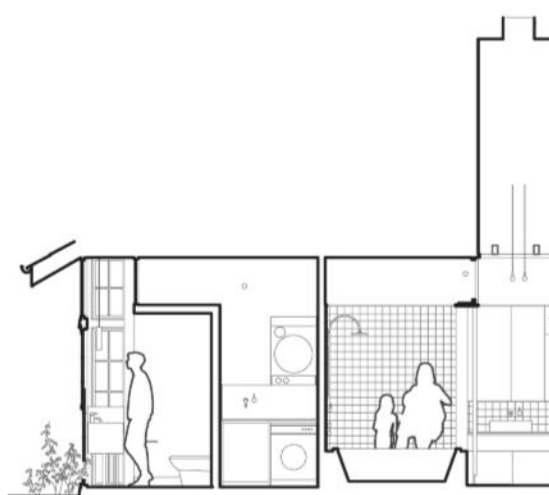
04 Irregular brass "legs" conceal pipes and reduce mass in the powder room.

05 The bath's height set the datum line for a wraparound of terrazzo tile.

06 Joinery unites the bathroom's storage and vanity elements with playful detailing.

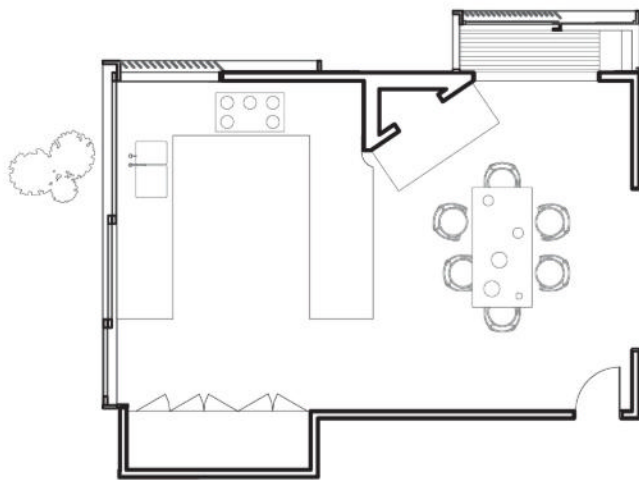


Bathroom elevation 1:100



Powder room, laundry and bathroom elevation 1:100

0 2m



Kitchen plan 1:100



Kitchen products

Internal walls: Paint and finishes in Dulux 'Whisper White'; profiled pine detailing from Finlayson's

Flooring: Bowral 76 dry-pressed bricks from Brickworks Building Products; existing pine boards

Joinery: 2-pac and natural brass details by T. Early and Sons; natural stone benchtop from Franca Design in 'Vagli'

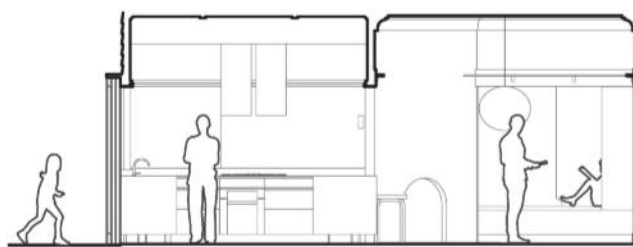
Lighting: Brightgreen Curve and Moon LED ranges; Nelson Bubble by Herman Miller from Living Edge; Flowerpot pendant and wall sconces by &Tradition from Cult

Sinks and tapware: City Stik tapware by Brodware from Elite Bathware and Tiles in 'Brushed Brass Organic'

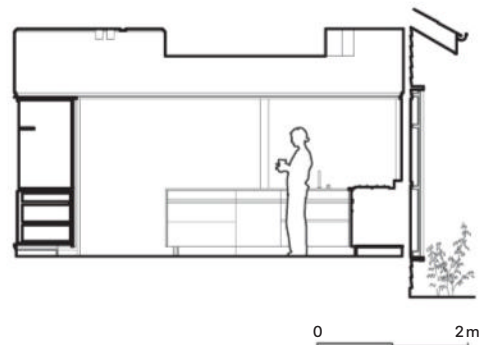
Appliances: Ilve 90 cm gas cooktop; Condari Qasair Albany single-motor rangehood in 'White'; Miele 60 cm VitroLine pyrolytic built-in oven; Bosch Series 8 fully integrated dishwasher; Fisher and Paykel French door fridge-freezer



07



Kitchen elevations 1:100



07 A large opening connects the kitchen to a newly formed outdoor room.

08 Sliding glass doors enable the kitchen to service inside and outside living spaces.

Surrey Hill Garden Terrace
is built on the land of the
Turrbal and Yuggera peoples.
Location
Meanjin/Brisbane, Qld

Architect
Kieron Gait Architects
+61 7 3399 5446
mail@kierongait.com.au
kierongait.com.au

Project team Kieron Gait, Kristian
Meredith **Builder** Kerwick
Constructions **Engineer** NJA Consulting
Joinery T. Early and Sons Furniture
Landscape designer Ecru Landscape

Elegant sufficiency

WOODWARD ARCHITECTS





An astute plan and a minimalist aesthetic reconfigure a compact Art Deco apartment into an ordered retreat that masters the art of small-scale living.

Words by Emma-Kate Wilson
Photography by Katherine Lu

How much space do we need to live well? This renovated apartment in a 1930s building in Sydney's Potts Point tests the possibilities of small-scale living, updating a 69-square-metre plan for a client who lives in Sydney but travels regularly. The brief was to create a multifunctional residence, maintaining heritage details while modernizing the kitchen and bathroom, and maximizing storage.

Set at the rear of an Art Deco block, Grantham Apartment has an idyllic treetop outlook that enables the northern light to filter through. The architect focused on increasing the natural light and sense of space while selecting finishes that respect the original architecture.

Woodward Architects made material and colour selections that would shift the occupant's perception of scale. Associate director Patrick Maitland explains: "The cooler wall colour enhances the feeling of space, and stainless-steel benchtops and fixtures give a contemporary feel. By combining these finishes with timber, we knew the apartment wouldn't feel cold."

A previous galley kitchen was opened to an L-shaped configuration to generate more floor space. Woodward Architects added a custom dining table with a concealed servingware drawer, spotted gum legs and a stainless steel top that echoes the surface

of the kitchen bench. A mass of overhead cupboards around the original sash window was removed, exposing the ceiling's height and flooding the kitchen with natural light.

With modern minimalism in mind, a continuous band of joinery is designed to recede into the background, concealing the dishwasher, oven, ample storage, entry to the adjoining bathroom, and the internal laundry. A floating linear pendant in the kitchen anchors the dining table and adds visual interest while providing indirect light and ambience for diners.

The bathroom is neatly tucked away within the centralized joinery. Inside, attention to detail has ensured a highly functional bathroom with a bath-and-shower combination, a handheld shower at a low level for pets, vertical heated towel racks, and overhead lighting as well as ambient wall light at the vanity. A fluted glass shower screen, slender tiles and terrazzo surfaces introduce subtle texture to the cool palette, which is offset by the warmth of spotted-gum joinery.

Patrick concludes: "Clean lines and reduced clutter, especially in smaller apartment settings, are important to ensure these spaces feel spacious and are easy to maintain." The result is a sanctuary of calm within the surrounding urban environment. ©



02



Floor plan 1:250

0 5m

- | | |
|--------------|----------------|
| 1 Entry hall | 6 Bathroom |
| 2 Study | 7 Kitchen |
| 3 Desk | 8 Main bedroom |
| 4 Laundry | 9 Living |
| 5 Pantry | 10 Balcony |

01 Reconfiguring the galley kitchen to an L-shape improved functionality as well as flow. Artwork: Hannah Nolan.

02 The bathroom door was integrated into kitchen joinery to avoid pokey thresholds.

03 Opening up previously enclosed spaces has refined circulation from the kitchen to the core of the apartment.



03



04

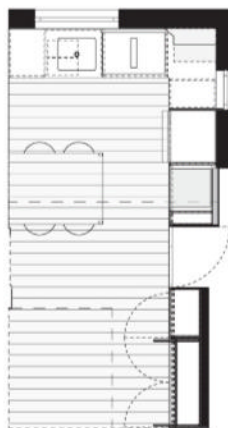


05

04 Overhead cupboards were removed to celebrate the volume of the space and allow light to fill the interiors.

05 A central dining table with a concealed drawer and stainless steel top is a place to dine and prep meals.

06 Crisp stainless steel benchtops add a minimalist, contemporary touch to heritage details.



Kitchen plan 1:100

0 2m

Kitchen products

Internal walls: Dulux paint in 'Lexicon Half'

Flooring: Australian Architectural Hardwoods spotted gum timber

Joinery: Poly 2-pac in Dulux 'Silver Tea Set'; stainless steel benchtop

Lighting: Linear stainless steel pendant by Flos from Euroluce

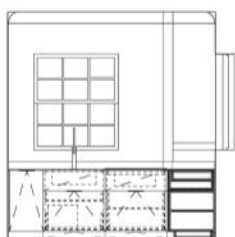
Sinks and tapware: Stainless steel Mythos 562 mm single sink by Franke and Culinary pullout mixer from Harvey Norman

Appliances: Stainless steel N90 induction cooktop in 'Black' and built-in ovens (N90 and steam) by Neff; Miele integrated dishwasher from Winnings

Other: Custom stainless steel and spotted gum dining table with concealed servingware drawer by architect (design) and joiner (build)



06



Kitchen elevations 1:100



07

Bathroom products

Internal walls: Dulux paint in 'Lexicon Half'; Yuki YKR1 border tiles from Artedomus

Flooring: Honed Bedonia tiles from Artedomus

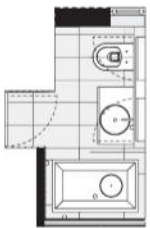
Joinery: Spotted gum veneers by Australian Architectural Hardwoods; honed terrazzo slab benchtop from Fibonacci Stone

Lighting: Mount St wall light by Dunlin in 'Chrome'

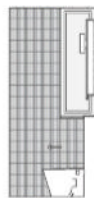
Tapware and fittings: Astra Walker wall-mounted tap and bath tap, ceiling-mount shower, and hand-held shower from Harvey Norman in 'Brushed Chrome'

Sanitaryware: Decina 1,200 mm bath from Smeaton Bathrooms in 'Gloss White'; Clay 400 ceramic basin by Robert Gordon; Reece toilet pan in 'Gloss White'

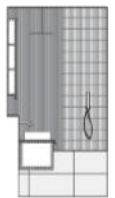
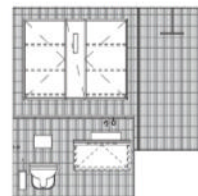
07 Textured glass and tiles are paired with spotted gum joinery to bring warmth to a subdued palette.



Bathroom plan 1:100



Bathroom elevations 1:100



Grantham Apartment is built on the land of the Gadigal people.
Location Warrane/
Sydney, NSW

Architect
Woodward Architects
+61 2 8041 7802
studio@woodwardarchitects.com.au
woodwardarchitects.com.au

Project team Matthew Woodward, Patrick Maitland, Alex Harrington **Builder** Dande Built
Engineer SDA Structures **Joinery** Superior Kitchens
and Joinery **Stylist** Katie Love **Energy and design consultant** Ella Fairbairn **Certifier** BuildCert



Be inspired by Australia's best homes

Architect: Fouché Architects / Photography: David Chatfield



Subscribe to HOUSES® magazine
at architecturemedia.com/store



Subscriptions:
+61 3 8699 1000
subscribe@archmedia.com.au

Publisher:
Architecture Media Pty Ltd
Level 6
163 Eastern Road
South Melbourne 3205
Victoria, Australia

Annual digital subscription (supplied by Zinio) Six issues 1 year
Instant delivery anywhere in the world A\$49

Annual print subscription

Six issues of *Houses* plus issue 20 of *Houses: Kitchens+Bathrooms* (2025)

Region	3 years	2 years	1 year	6 months
Australia	A\$248	A\$175	A\$91	A\$45.50
US/Canada	US\$313	US\$220	US\$115	US\$57.50
Rest-of-world (air)	A\$419	A\$296	A\$154	A\$77

IN FOCUS

Dependability and precision

For Sub-Zero Wolf, decades of engineering innovations have crafted uncompromising products fit for food and wine connoisseurs who love to cook at home.

Elevate your kitchen with Sub-Zero and Wolf – the specialists in food preservation and precision cooking. Iconic Sub-Zero refrigeration preserves food at its delicious peak and guards wine against its enemies.

Sub-Zero creates products of uncompromising craftsmanship that are more than just refrigerators. They are a suite of food-preservation technologies that keep food fresher longer by addressing the three pillars of food preservation: precise temperature control, optimal humidity and purified air. Reimagined and full of fresh ideas, Sub-Zero's newest product range offers an expanded suite of innovative features and sleek aesthetic enhancements.

Wolf equips home cooks with chef-level performance for the confidence to turn out exquisite meals time and time again. Individual tastes in both food and design find limitless expression with Wolf.

Sub-Zero and Wolf appliances are enduring in their design. Beyond the instantly recognizable grille of a Sub-Zero or the signature red knobs of a Wolf is a vast array of equally design-forward appliances to provide a solution for any kitchen aesthetic. Choose from designs that can boldly stand out or disappear seamlessly into the kitchen décor in various widths and configurations.

Beyond the appliances' beauty are their superior-grade materials, impeccable craftsmanship, decades of engineering innovations, and dependability and performance backed by the ongoing commitment of a third-generation family-owned company.

Visit a showroom and explore the timeless designs, fresh features and elevated performance of Sub-Zero and Wolf. SUB-ZERO AND WOLF.



01



02

01 Sub-Zero's newest product range can be integrated into joinery or a feature in the kitchen design.

02 Both Sub-Zero and Wolf appliances are made with superior materials for durability and elegance.



For more information on Sub-Zero Wolf:
subzerowolf.com.au

Finding the perfect fit

The English Tapware Company is a proud family-owned business and personally selects the products that make up its curated collection of elite kitchen and bathroom fittings.

The English Tapware Company offers guests an expertly curated selection of beautifully crafted kitchen and bathroom fittings, including luxury tapware, basins, baths and architectural hardware. At this proud family-owned business, a team personally selects products of exceptional design, quality and function to suit a variety of interior projects. Working closely with clients, the company's specifiers will ensure the right fittings are chosen to complement and enhance your upcoming projects from UK brands Perrin and Rowe, The Water Monopoly, Joseph Giles and more.

Throughout Beaumaris House, designer Melissa Balzan specified Perrin Rowe Contemporary tapware, which combines beautiful style and engineering excellence. A team of specialists is dedicated to perfecting the design of each tap fixture. At a glance, these brass taps emanate quality, while closer inspection reveals the incredible attention to detail and precision engineering of every component.

The Water Monopoly's Rockwell bath is a reproduction of an antique bath with a modern twist, making it equally at home in traditional or contemporary settings. It is manufactured in England from Vitrite, a stone-and-mineral composite that replicates the original bath's look and feel while reducing its weight.

Luxury architectural hardware specialist Joseph Giles is an exceptional British business with an impressive portfolio of residential and commercial projects across the globe. Since 1998, it has built a reputation as one of the finest designers and manufacturers of bespoke door hardware in the UK. The team's professionalism and attention to detail secured significant contracts with the Royal Family, celebrities and other high-end clients.

Joseph Giles appreciates the importance of scale: cabinet edge pulls are between 50 mm and 1,000 mm long, and door edge pulls are between 150 mm and 1,000 mm long. Pulls are available in Flat, Curved, Cube, Round or Moon profiles. Joseph Giles offers quality architectural hardware for every position throughout the home, from door and window hardware to hanging rails for utility spaces. THE ENGLISH TAPWARE COMPANY.





02

01 A specialist design team creates Perrin and Rowe's contemporary and precisely engineered tapware.

02 Joseph Giles cabinet edge pulls are available in Flat, Curved, Cube, Round or Moon profiles.

03 The Water Monopoly's Rockwell Bath is made from Vitrite, a stone-and-mineral composite.



03

— THE —
ENGLISH
TAPWARE
 — COMPANY —

For more information on The English Tapware Company:
englishtapware.com.au

Soft geometry: Presenting the Ona collection

Designed in collaboration with Noa Design and Benedito Design, Roca launches Ona, its new collection inspired by the Mediterranean.

Ona, which means “wave” in Catalan, stands out for its versatility, wide range and timeless design that features soft shapes and geometric lines. The Mediterranean Sea region – its landscapes, lifestyle and values – inspired the collection, which offers solutions to fully equip any type of bathroom space.

Developed by the Roca Design Center team in collaboration with international studios Noa Design and Benedito Design, Ona is defined by Mediterranean-inspired soft shapes and geometric lines. This collection includes the latest innovations from the Roca brand, such as materials Fineceramic and Stonex.

Manufactured with a respectful approach to natural materials and sustainability, Ona stands out for its versatility. It is a complete bathroom collection that combines functional and accessible design with new standards of hygiene and comfort, making the collection highly suitable for renovations. Whether in main or secondary private bathrooms, hotel bathrooms or other public spaces with intensive use, Ona’s high-quality design stands the test of time.

Fineceramic in basins: natural hygiene and delicate shapes

Made in collaboration with Noa Design, these basins exemplify all possibilities offered by Fineceramic, a ceramic material that allows for finer and lighter pieces adapted to any size. Further, Fineceramic facilitates a more sustainable production process: it generates zero waste, all its composites are natural, and its reduced weight positively impacts firing and transport, reducing CO₂ emissions.

The basin range includes different options where the bowl is placed asymmetrically or centred to provide additional shelving space. Over-countertop basins are also available in rectangular and round shapes with ‘White’ or ‘Matt White’ finishes.

Baths to feel closer to the Mediterranean

Ona bathtubs recall a peaceful and relaxing swim in the Mediterranean thanks to their large inner dimensions and pleasant Stonex texture. Also inspired by natural resources, Stonex is an exclusive Roca material that stands out for its high resistance to slips and abrasions.

Rimless toilets, maximum hygiene standards

All toilets are of the latest rimless generation, which makes cleaning easier and guarantees outstanding hygiene standards. ROCA.



01



01 Ona basins are created from Fineceramic, a material that allows for fine, light and adaptable pieces.

02 The highly durable Ona bathtub is slip resistant, sleek and very spacious.

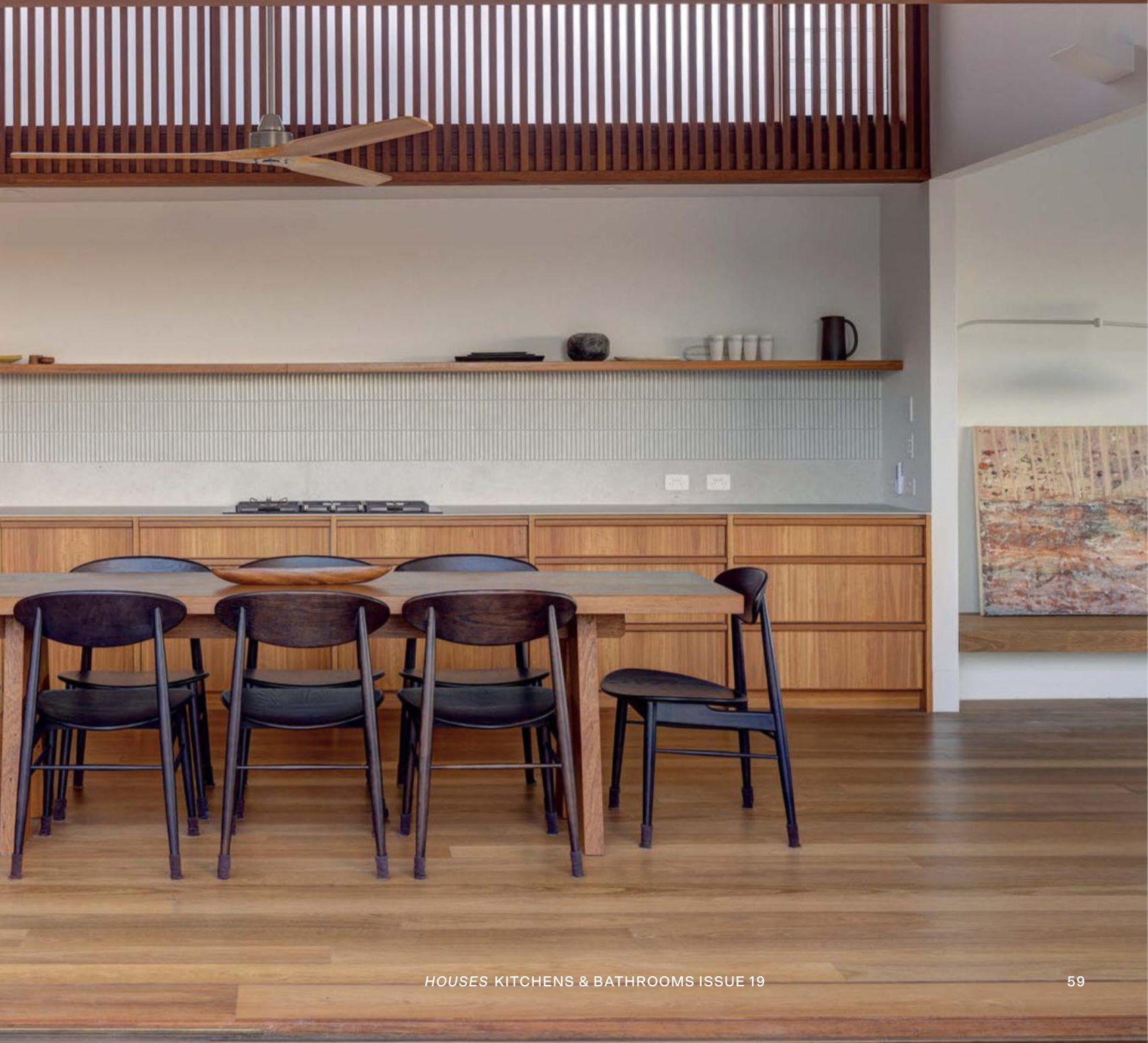
Roca

For more information on Roca:
roca.com.au



Seaside sanctuary

POLLY HARBISON DESIGN



Perched above Copacabana Beach, this robust and relaxed holiday house welcomes guests, withstands sandy feet and kindles connections to the outdoors.

Words by Leanne Amodeo
Photography by Brett Boardman

In designing a new beach house for her clients, architect Polly Harbison faced the challenge of an old house aged beyond repair. “The original house had not coped well with the long, narrow site’s southwestern orientation, overheating in summer and freezing in winter,” says Polly, principal and director of Sydney-based Polly Harbison Design. “And while my clients, David and Susan, were initially surprised when we lowered the floor level of the new house and located the kitchen away from the beach-facing facade, they still can’t believe how different this makes the site now feel.”

An L-shaped plan creates a private northern courtyard sanctuary, with the long narrow form of the ground-level kitchen framing the view of the beach. This “periscope” perspective dramatically increases the impact of their ocean view, drawing the eye out and making the room seem even larger than it is. The kitchen also opens up to the courtyard; in blurring the boundary between inside and out, Polly has created a quintessentially modern and highly covetable Australian seaside retreat. Her material palette is incredibly restrained, and it highlights the blackbutt joinery’s fine craftsmanship, punctuating it with a white finger mosaic tile splashback.

The stairs from the courtyard deck lead down to the lower ground level, where two bedrooms, a bathroom and an outdoor bath provide plenty of room for visiting guests. To meet the brief, all spaces in the house had to have a strong connection to the outdoors, and this theme is beautifully expressed in these bathrooms – and, upstairs, in the main bedroom ensuite. As Polly explains, “This house is designed for the holidays, to be enjoyed as family and friends go to and from the beach, so the interiors needed to be both calm and robust. The generous height of each room gives a sense of spaciousness, and the beauty of the bathrooms comes from the experience – visible patches of blue sky, plenty of greenery and an enveloping sense of tranquillity.”

An ensuite that opens up to the sky references the tradition of Japanese *onsen*, while the actual outside bath is a considered study in material contrasts. The clean, smooth surface of the bathtub works well within a natural context of gently weathered timber and lush plants, with two different types of white tile providing added texture. Polly’s peaceful, minimalist design makes for a relaxing retreat on the New South Wales central coast that the clients must find hard to leave when the holidays end. 🏡

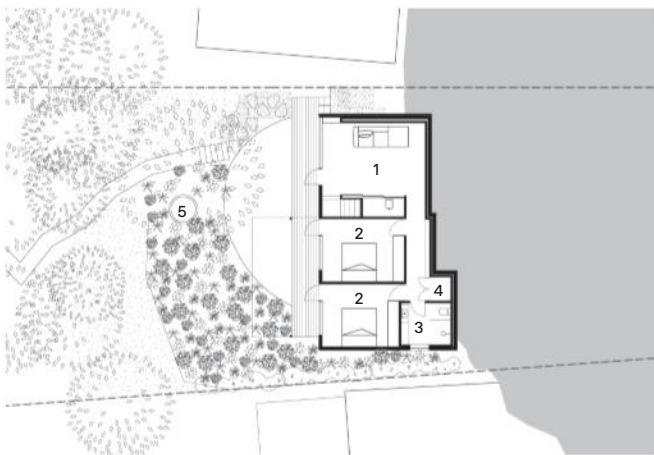
01 Solid blackbutt edging, battens and finger pulls add rhythm and texture to the L-shaped kitchen.

02 The long plan draws the eye to the ocean view, making the room feel larger than it is.

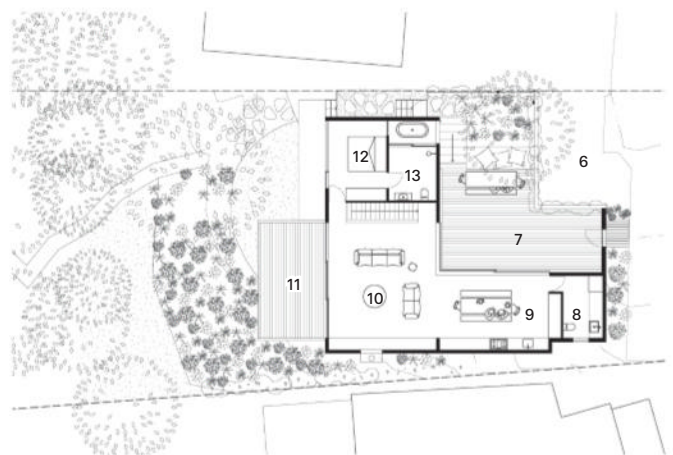
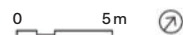
- 1 Rumpus
- 2 Bedroom
- 3 Bathroom
- 4 Storage
- 5 Outdoor bath
- 6 Carpark
- 7 Courtyard
- 8 Powder room
- 9 Kitchen
- 10 Living
- 11 Balcony
- 12 Main bedroom
- 13 Ensuite



02



Lower ground floor 1:400



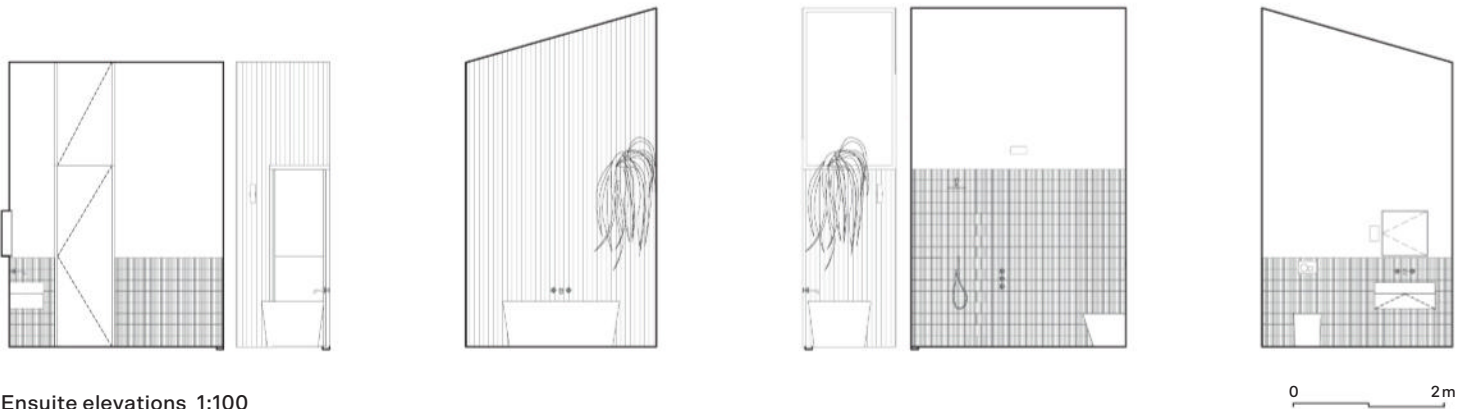
Ground floor 1:400



03



04



Ensuite elevations 1:100

Bathroom products

Internal walls: Dulux paint in 'Snowy Mountains'; Fiandre Fjord 600 mm × 600 mm tiles from Artedomus in 'White Natural'; Ardex grout in 'Misty Grey 341'; Yuki tiles in 300 mm × 300 mm sheets from Artedomus in 'White'

Flooring: Fiandre Fjord 600 mm × 600 mm tiles from Artedomus in 'White Natural'; Ardex grout in 'Misty Grey 341'

Joinery: Select-grade blackbutt veneer drawerfront with solid blackbutt edge and fingerpull in Liberon finishing oil; 32 mm solid blackbutt timber dowel hooks; solid blackbutt timber bench

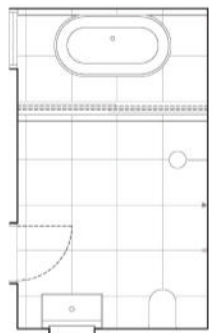
Lighting: Tovo Wedgie in 'White'; client-supplied ceramic wall light

Tapware and fittings: Brodware City Plus tapware in 'Brushed Nickel'; Dado Julia bathtub from Sydney Tap and Bathware; Caroma TEO wall basins

Sanitaryware: Caroma Urbane wall-hung toilet; Sigma 50 wall plates in 'Brushed Nickel'



05



Ensuite plan 1:100

0 2m



03 In the lower-floor bathroom, a muted floor foregrounds the feature mosaic tiles and timber vanity.

04 High-level openings engage the ensuite with the sky and manage privacy.

05 A circular concrete tub hosts an outdoor shower nestled in the western landscape.



06 Brass pulls paired with blackbutt timber veneer forms elegant and easy-to-maintain kitchen joinery.

07 Mosaic tiles line the wall of the benchtop and continue the vertical kitchen details.

08 The pantry, fridge and powder room door are integrated into the joinery.

Kitchen products

Internal walls: Dulux paint in 'Snowy Mountains'

Flooring: Tallowwood boards

Joinery: Select-grade blackbutt veneer drawerfront with solid blackbutt detail and finger-pull in Liberon finishing oil; Fiandre Fjord porcelain benchtop from Artedomus in 'White Natural'; Yuki tile splashback from Artedomus in 'White'; Studio Henry Wilson Cove brass pulls

Lighting: Tovo Wedgie in 'White'

Sinks and tapware: Franke Bolero Box undermount stainless steel sink; Brodware City Plus kitchen set in 'Brushed Nickel'

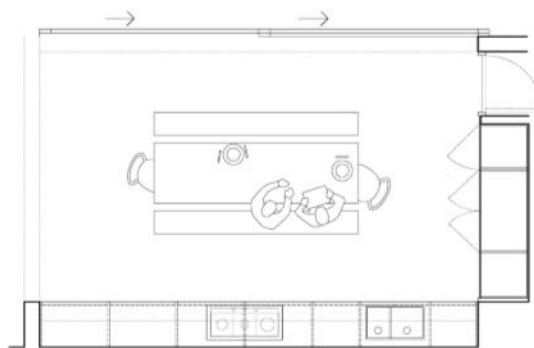
Appliances: Franke stainless steel cooktop; Miele oven and microwave; Bosch dishwasher; fridge/freezer by client

Other: Custom table by Zandt Building; tallowwood doors and windows from Bakers Joinery



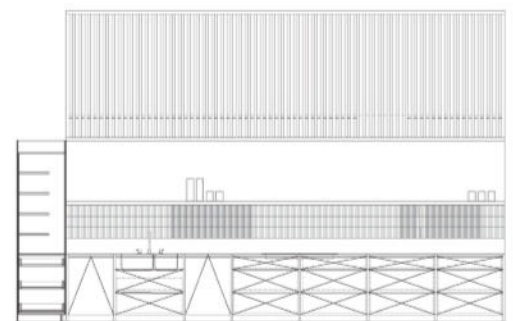


08



Kitchen plan 1:100

0 2m



Kitchen elevation 1:100

Copacabana House
is built on the land of
the Darkingung people
Location Copacabana, NSW

Architect
Polly Harbison Design
+61 414 850 136
info@pollyharbison.com.au
pollyharbison.com.au

Project team Polly Harbison, Bridget
Webb, Jiang Jincheng **Builder** Zandt
Builders **Engineer** Eddy Engineer **Joinery**
Bakers Joinery **Landscape designer**
Michael Cooke Landscape

Pitch perfect

WEAVER AND CO ARCHITECTS





In Melbourne's western suburbs, a new home for a family of five prioritizes northern aspect to immerse the interiors in light and landscape.

Words by Leanne Amodeo
Photography by Tasha Tylee

The house Martyn Weaver designed for his clients idyllically sits across from a park on a tree-lined street in Melbourne's Yarraville. Not surprisingly, the couple wanted their new two-storey home to have a strong connection to the outdoors, which subsequently determined the design's outcome. "The aim was to design a building that sat comfortably within the street context of predominantly single-storey period homes," says Martyn, who founded Weaver and Co Architects in 2018. "The house engages its environment, initiating connections between occupants, pedestrians, public parkland and private gardens, blurring and enlivening spaces on both sides of the public/private threshold."

Staying true to his clients' desire for soft minimal design and plenty of natural light, Martyn's scheme positions the living areas around a central north-facing garden courtyard that opens through to the street and the park beyond. The garden and exterior are the stars of this layout; the kitchen, cast in a supporting role, is understated as a result. It provides lots of hidden storage, an out-of-sight pantry and overhead joinery that conceals the rangehood and continues through to the other living areas. Martyn's predominantly Victorian-ash palette adds to the simplicity and elegance of the overall aesthetic, infusing the space with a feeling of warmth that perfectly embraces the family of five.

Such a serene backdrop for everyday living is also reflected in the downstairs ensuite and first-level bathroom. As Martyn explains, "The bathroom and ensuite are each located at the end of a circulation path, and these end spaces are planned to 'hug' the user. Both spaces also utilize skylights, offering a moment to look up and change perspective upon entering the room." In addition, the ensuite boasts its own secluded small courtyard, providing a garden view while showering or bathing.

Martyn has used organically shaped details to soften these two spaces, and the rounded skylights and curved vanity legs also add an element of dynamism. In keeping with the overall theme of the design, the colour palettes are inspired by the home's surroundings: the green ensuite is a nod to the garden and nearby park, and the bathroom takes its cue from the deep red roofs of neighbouring houses. The attention to detail is especially evident in the vanity units, which sit off the tiled wall, keeping the highly visible joint clean and crisp. Not only is the home effortlessly beautiful, it is very practical: durable, timeless and adaptable. ©

01 Stone, timber and muted colours infuse the home with an understated, elegant aesthetic.

02 A vaulted hip ceiling accentuates scale in the kitchen, living and dining zones.

03 Living spaces enfold a north-facing, centrally located garden and courtyard in an alternative to a traditional backyard.

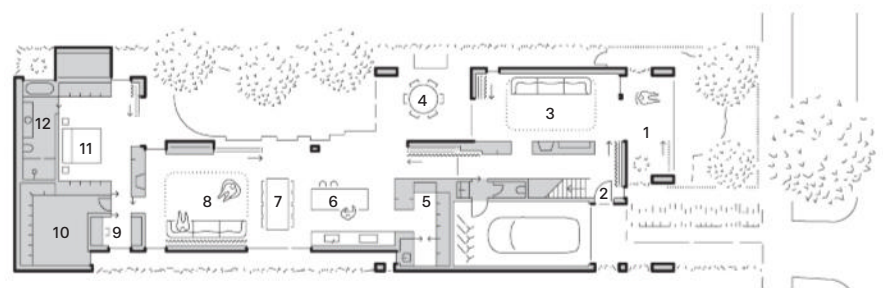


03

- 1 Verandah
- 2 Entry void
- 3 Lounge
- 4 Alfresco dining
- 5 Pantry/laundry
- 6 Kitchen
- 7 Dining
- 8 Living
- 9 Study
- 10 Guest room
- 11 Main bedroom
- 12 Ensuite
- 13 Bedroom
- 14 Bathroom



First floor 1:400



Ground floor 1:400

0 5m ↑



Kitchen products

Internal walls: GoodWood Victorian ash shiplap lining boards from Australian Sustainable Harwoods; Dulux paint in 'Natural White'

Flooring: GoodWood Victorian ash solid timber boards from Australian Sustainable Harwoods

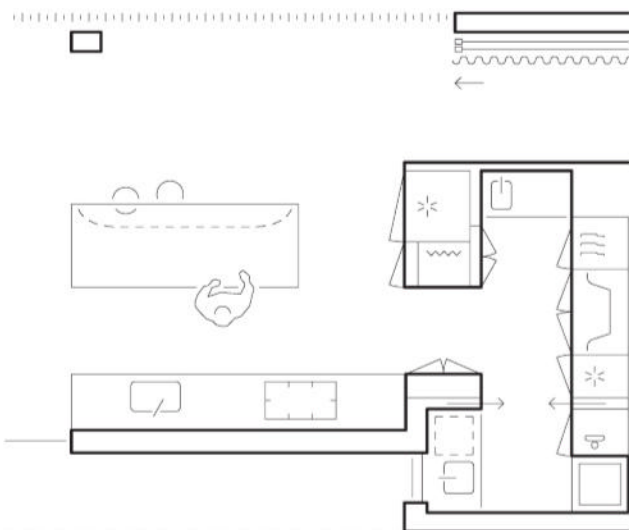
Joinery: Honed Super White quartzite benchtop from G-LUX; 2-pac joinery in Dulux 'Wistow' (overhead cupboards) and 'Spanish Olive'; GoodWood Victorian ash timber veneer from Australian Sustainable Harwoods; handles from Designer Doorware

Lighting: Apollo 39 pendant from Phol; LED uplighting from Gineco Lighting

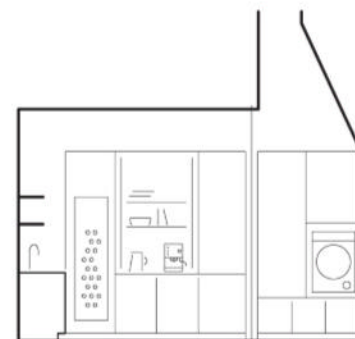
Sinks and tapware: Franke Bolero double sink and Mythos mini sink; Astra Walker Icon sink mixer in 'Champagne Brass'; Zip Hydrotap G5 Arc

Appliances: V-Zug oven; Miele induction cooktop and integrated dishwasher; Liebherr integrated fridge, freezer and wine chiller cabinet; Sirius fully integrated rangehood; Hafele One2Five integrated wastebin; Beefeater Signature Proline barbecue

Other: Puffalo couch by Ross Didier; Post table and chair by Fredericia from Cult; Norma barstool by Arper from Stylecraft; D102 coffee table by FDB Møbler from Open Room; Moroccan Atlas 51 rug by Halcyon Lake; Palisade outdoor dining set in 'Sky Grey' by Hay from Open Room



Kitchen plan 1:100



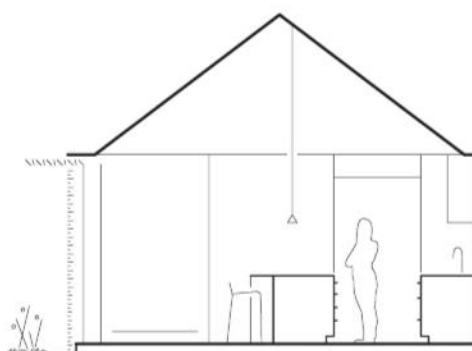
Pantry and laundry elevation 1:100



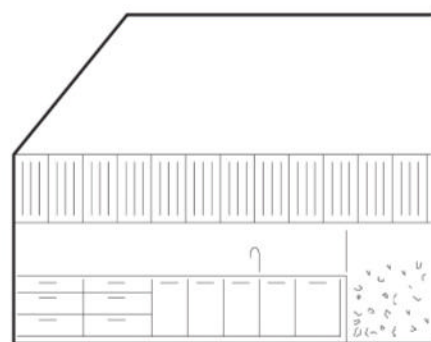
05

04 A hidden pantry and laundry provide practical working spaces concealed from the kitchen.

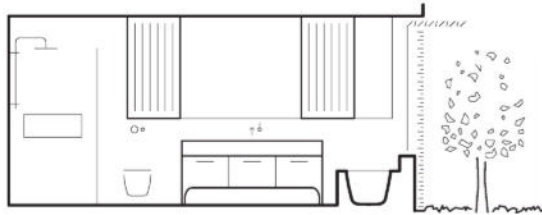
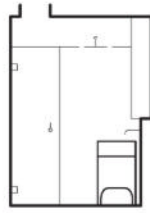
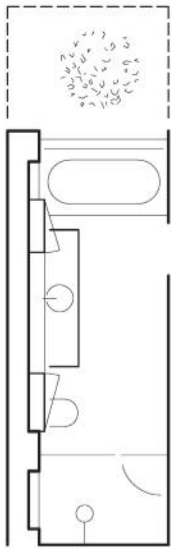
05 Overhead kitchen cupboards block neighbouring views, create more storage and conceal the rangehood.



Kitchen elevations 1:100



0 2m



Ensuite plan 1:100



Ensuite elevations 1:100

06 Curved legs on the vanities soften the linear joinery, mirrors and mosaic tiles.

07 Skylights in the bathrooms draw the eye up for a change of perspective and mood.

08 Vanities sit proud of the mosaic-tiled walls to hide the join and give the appearance of a freestanding bench.



06

Bathroom and ensuite products

Internal walls: Fiandre Colour Studio mosaic wall tiles in 'Powder' and 'Cream' from Artedomus

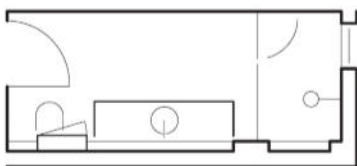
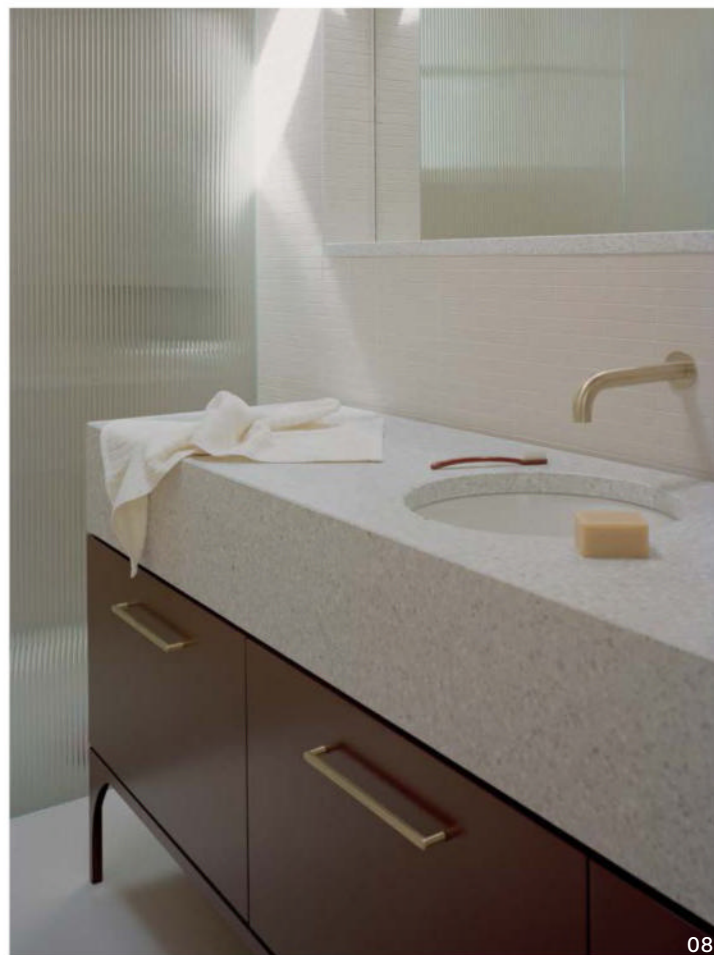
Flooring: Fiandre Colour Studio floor tiles in 'Powder' and 'Cream' from Artedomus

Joinery: Honed Super White quartzite benchtop from G-LUX; 760 terrazzo benchtop from Signorino; 2-pac joinery in Dulux 'Spanish Olive', 'Nimrod' and 'Blood Mahogany'; brass handles from Designer Doorware; vanity unit with steel curved legs by Inner West Joinery

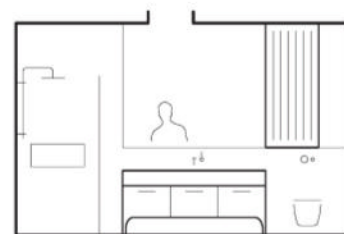
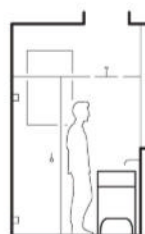
Lighting: Lumi Sfera wall light and C1 downlight from Gineco Lighting

Tapware and fittings: Astra Walker Icon range in 'Champagne Brass'

Sanitaryware: Kohler undermount basin; Kaldewei Classic Duo bath; Arcisan Synergii wall-hung pan with Gerberit concealed cistern



Bathroom plan 1:100 0 2m ↑



Bathroom elevations 1:100

Gable Park is built on the land of the Bunurong people.
Location Naarm/ Melbourne, Vic

Architect
Weaver and Co Architects
+61 406 297 578
hello@weaverandco.com.au
weaverandco.com.au

Project team Martyn Weaver, Sushma Prabhu, William Tran, Dean Connor
Builder CBD Contracting Group
Engineer Donnelly and Co Consulting Engineers
Joinery Inner West Joinery
Landscape design Ben Scott Garden Design
Landscape installation Gourlay Landscapes
Stylist Jess Kneebone
Furniture selection Lucy Marczyk Design Studio

Bijou beauty

ROOM ON FIRE





Rich materiality and refined detailing enhance space, light and experience in this diminutive sandstone cottage in Surry Hills.

Words by Leanne Amodeo
Photography by Prue Ruscoe

There's no shortage of charm among the historic terraces and cottages of Surry Hills, and Room on Fire's most recent renovation is no exception. The home on Little Riley Street occupies a tiny 30-square-metre site, and its two levels and attic total a mere 65 metres of floor space. Interior designer (and founder of Room on Fire) Chloe McCarthy closely worked with builder Jesse McCallion of Belle Frederick Projects to renovate the circa-1835 property as a short-term accommodation, sensitively restoring its original features, prioritizing comfort and activating functionality.

Chloe reconfigured the interior to achieve a greater sense of space and logical flow, which included relocating the kitchen and adjoining living areas to the first level. "This floor is the brightest, with light filtering in from a skylight over the attic stairwell through the perforated steel stairs," she explains. "My design involved maximizing space, natural light, storage and a connection to nature, as well as carefully curating a palette to create a home that's timeless and serene despite its inner-city location."

While banquette seating bridges the kitchen and other living areas (with built-in drawers providing much-needed storage), the room's focal point is

undoubtedly the original sandstone boundary wall. Chloe and Jesse removed nearly 200 years' worth of paint and plaster, and the effect is stunning – it adds warmth and texture, evoking a sense of history and old-world charm. (Interestingly, while much of Surry Hills sits in a heritage conservation zone, the home itself is not heritage listed.) The space appears thoroughly modern, though, and the contrasting stainless steel benchtop, custom-pressed sink and short splashback have been sanded to achieve a lived-in patina that doesn't feel cold or sterile. New Tasmanian blackwood joinery is complemented by local designer Henry Wilson's PSL drawer handles.

Rich materiality continues in the ground-level bathroom and attic ensuite, with the latter concealed behind the wardrobe's doors, creating an element of surprise once opened. The travertine mosaic tiles echo the warmth of the sandstone on the levels below, as does the raw brass trim of the custom vanity mirrors. It's a bright space – and a contrast to the ground-floor bath, the only room in the house without natural light. Chloe finished this bathroom in warm grey to accentuate its cosy moodiness, highlighting the overall scheme's refined detailing and craftsmanship. 🏡

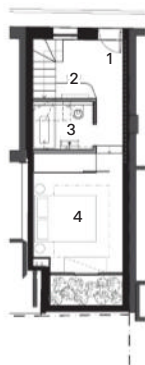


01 Curved edges soften the threshold between kitchen and living zones. Artworks (top to bottom): Cassie Hansen, Simone Karass, Tetsuya Kowari.

02 Layers of paint and plaster were removed to reveal the sandstone walls. Artwork: Morgan Stokes; ceramics: Tetsuya Ozawa, John Born.

03 An open plan allows natural light to fill the first floor. Ceramics (L-R): Toru Hatta, Kazuya Ishida, Suvira McDonald; sculpture: Caroline Duffy.

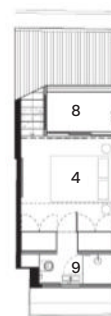
- | | |
|--------------|-----------|
| 1 Entry | 6 Dining |
| 2 Study nook | 7 Living |
| 3 Bathroom | 8 Terrace |
| 4 Bedroom | 9 Ensuite |
| 5 Kitchen | |



Ground floor 1:250

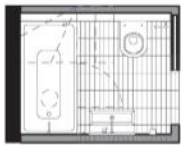
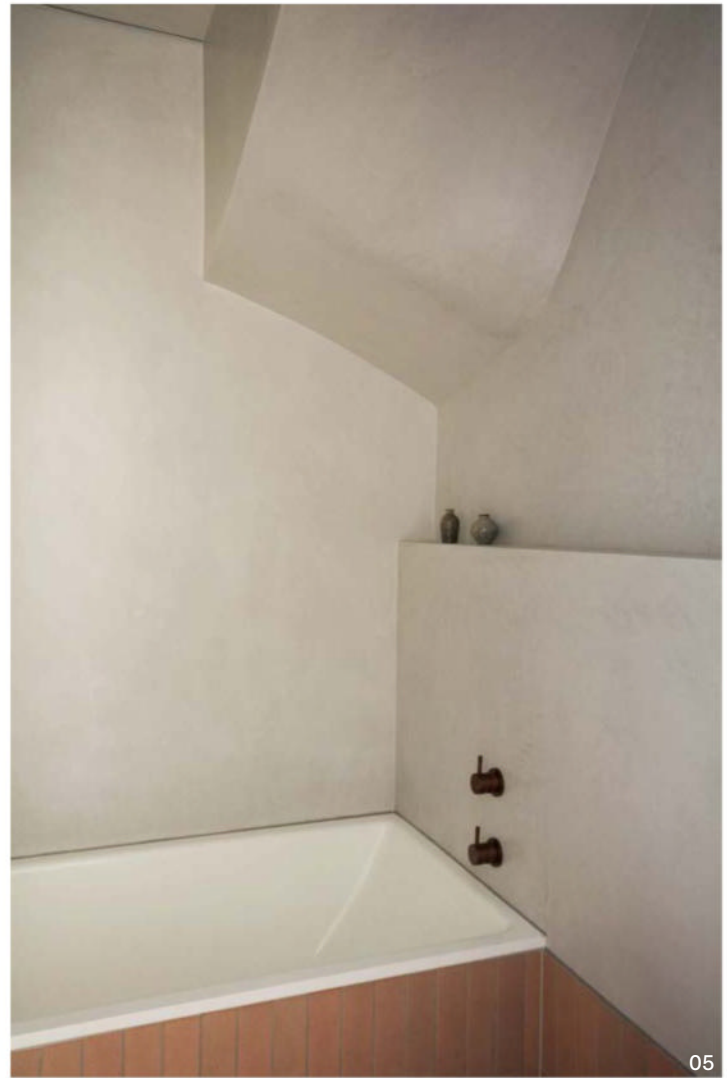


First floor 1:250

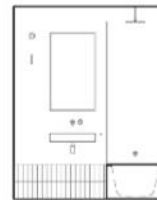
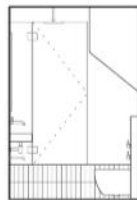


Second floor 1:250





Bathroom plan 1:100



Bathroom elevations 1:100

Bathroom products

Internal walls: Microcement (ground floor); sandblasted Travertino Navona Medio Mattone mosaics from Bisanna (ensuite)

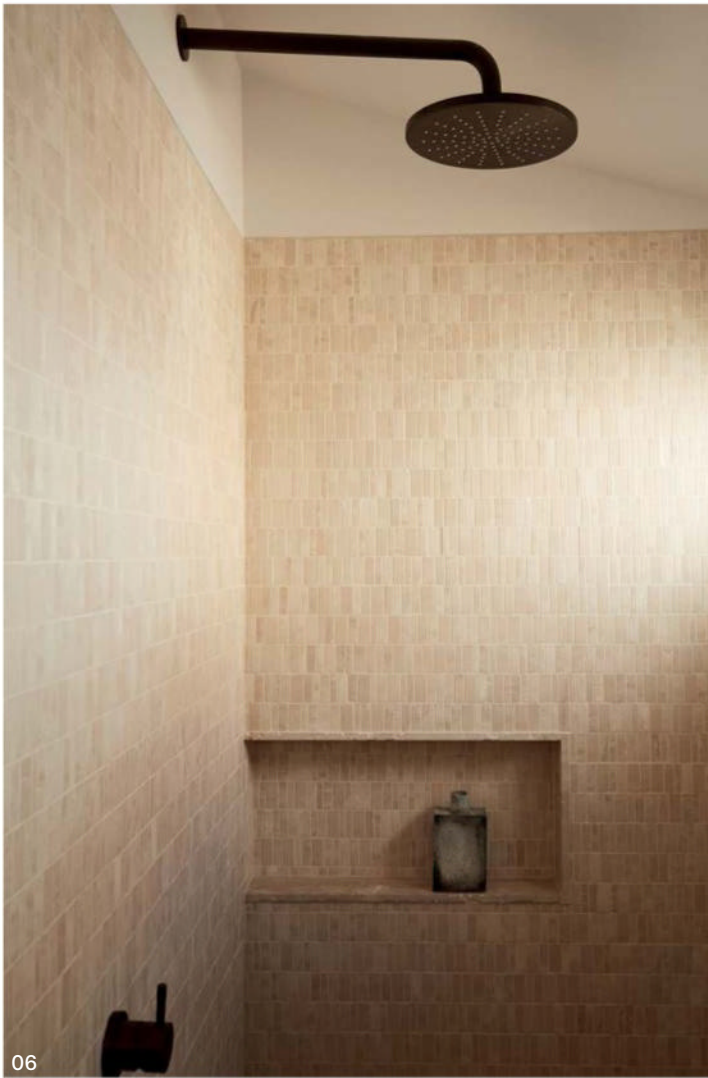
Flooring: Inax Fabe OX tiles from Artedomus

Doors and windows: PSL pull by Henry Wilson; timber louvre window frames in 'Popcorn' by Porter's Paints

Lighting: Concealed LED strip; Volker Haug Anton Micro wall light

Tapware and fittings: Yokato range tapware by Brodware; Gio hook by Henry Wilson (ground floor); vintage teak mirror (ensuite)

Sanitaryware: Me toilet by Starck with compact rimless wall pan, concealed cistern and soft-close Durafix fixings; Spy 60 wall and bench basins (600 mm × 300 mm × 110 mm) and Kaldera 4 bath (1,500 mm × 750 mm × 480 mm) from Candana



06



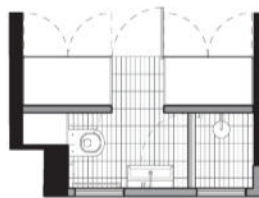
07

04 Streamlined fittings maximize usable space in the ground-floor bathroom.

05 The curve of the stair becomes a sculptural element finished in microcement.

06 Travertine mosaic tiles in the ensuite are a modern twist on the existing sandstone walls.

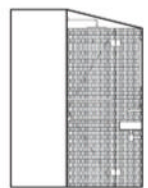
07 The ensuite is concealed behind wardrobe doors.



Ensuite plan 1:100



Ensuite elevations 1:100



Kitchen products

Internal walls: Brick walls rendered and painted in 'White Sand' by Porter's Paints; ceilings painted in 'Popcorn' by Porter's Paints

Flooring: Solid tallowwood; metal grille terrace floor

Joinery: Sanded stainless steel benchtop, splashback and kicker; Tasmanian blackwood veneers; Performance linen banquette seating; vein-cut travertine storage unit benchtop

Lighting: Alvar Aalto Golden Bell pendant by Artek from Anibou

Sinks and tapware: Custom sink with Yakato mixer by Brodware

Appliances: Bosch integrated dishwasher and Serie 6 60 cm pyrolytic oven and induction cooktop; Siemens 254 L IQ500 integrated bottom-mount fridge; Falmec 60 cm Siena+ under-cupboard rangehood

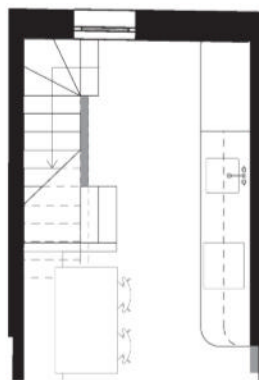
Other: Timber doors and windows painted in 'French Green' by Porter's Paints; vintage Japanese ceramics from The DEA Store; various ceramics and artworks from Curatorial and Co

08 A perforated steel stair filters light from a skylight into the narrow plan. Vase: Hattie Molloy.

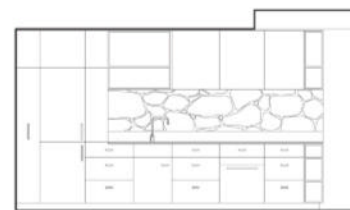
09 Open shelves allow the kitchen to be read as a piece of furniture. Vase: Ilse Crawford.



08



Kitchen plan 1:100



Kitchen elevation 1:100

The Cottage is built on the land of the Gadigal people.
Location Warrane/ Sydney, NSW

Designer
 Room on Fire
 +61 438 752 895
 info@roomonfire.net
 roomonfire.net

Project team Chloë McCarthy, Jesse McCallion
Architect for Development Application Rudolfsson
 Alliker Associates Architects **Builder** Belle Frederick
 Projects **Engineer** Ashby Doble PTY Ltd **Joinery** ACJ
 Design Joinery **Stylist** Chloë McCarthy

Reimagining pocket systems

With its fully integrated slide-in doors, Blum's REVEGO pocket system seamlessly tucks away cluttered working spaces to keep your open-plan living areas neat and tidy.

Doing more with less is a challenge that designers and architects face more now than ever before. As high-density housing becomes a growing trend across Australia, the demand for flexibility in design means that including multifunctional spaces is a must.

Blum's new REVEGO pocket system is designed to meet the growing demands of clients and designers. As more people begin to merge their kitchen, dining, living and office spaces, designers now have the ability to specify fully integrated REVEGO slide-in doors to quickly open practical workflows and spacious work surfaces when needed – and close them again when they are not in use. This also helps to create a home-like atmosphere with a sense of creativity and design.

The German Design Award-winning REVEGO was created to reimagine the way designers utilise pocket systems, so it provides flexible design options and enhanced manufacturing, delivering quality projects more efficiently than ever before. REVEGO uno and REVEGO duo offer both single- and double-door applications, which can be used independently or combined to create truly unique designs that are suitable for floor-to-ceiling applications in heights and widths up to 3 m.

The first of its kind, Blum's pocket system comes standard with a TIP-ON mechanical opening support system, giving designers the option to create smooth, handle-less pocket doors that blend seamlessly into the furniture. Elegant handles can be added for aesthetic purposes if required.

Consistent with Blum's existing product ranges, REVEGO's standardised pocket widths make the product simple and easy for manufacturers to assemble, ensuring a precise fit for every project. Unlike other pocket systems, REVEGO is fully integrated into the run of furniture. This gives designers the freedom to explore and enhance their designs surrounding the application, making the most of the furniture within and next to the pocket system.

With the REVEGO application available through Apple's App Store, designers and clients can open it in their space, on their iPhone or iPad, for on-site inspiration and insight into their proposed designs.

Quality and reliability are synonymous with the Blum brand. Tried-and-tested TIP-ON motion technology offers peace of mind for designers and clients. Whether you're shaping a future kitchen, office or living space, Blum guarantees you long-lasting memorable motion that functions just as beautifully as it looks. BLUM.





03

01 The REVEGO system is available in both single- and double-door applications.

02 The pocket doors include the TIP-ON mechanical opening support system for handle-free access.

03 Standardised pocket widths make installation of this product easy for manufacturers.



For more information on Blum:
blum.com/au/en

The epitome of modern tapware

VOLA tapware is a Danish design classic, with longevity and superior functionality at the core of each product.

VOLA has been making life better since 1968, when it first introduced the iconic modern tap to the world. The company's original tapware design by Arne Jacobsen was based on VOLA founder Verner Overgaard's vision of a new type of concealed, wall-mounted mixer tap with only the handles and spout exposed. That design was the VOLA 111, and it remains the epitome of the modern tap: an iconic representation of the perfect intersection of craft and technology. Another iconic VOLA design is the KV1, which was selected for MoMA's permanent collection in 1974. Its subtle curves and precise junctions continue to bring timeless elegance and superior functionality to kitchens around the world.

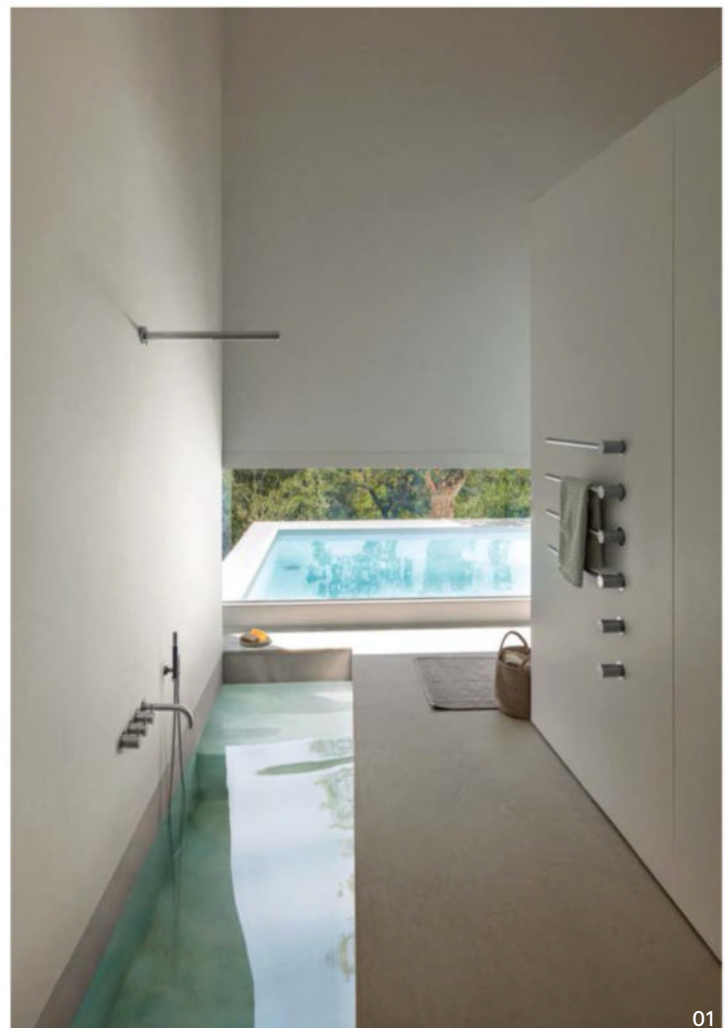
From this original modern tap design through to its ongoing commitment to longevity, VOLA now influences all corners of the globe. The company prioritizes the human experience, valuing simplicity, wellbeing and a mindful way of living that benefits everyone. It's not just about designing and making products – it's about creating an infrastructure for a good life, in a way that lasts. This philosophy comes from Danish culture, which values creating an infrastructure for living. Its aesthetic is admired for its pure forms, honest materials and respect for both craft and durability.

Danish design is also renowned for its emphasis on the sensory experience, which involves more than how things look or how they are made. How design feels is essential to its right to exist, and design that caters to the senses can help us achieve a more fulfilling and enjoyable lifestyle. VOLA pays great attention to the quality, meaning and true value of things, removing excess and instead promoting a simple way of life.

Since the beginning, all VOLA products have been based on a unique modular system that can be configured to work in any space and with any design. This approach has always been defined by durability and longevity. And while many designs have a timeless look, true longevity goes much deeper than appearance. By adhering to its original design, VOLA can still provide parts for every product made since 1968 – and products are still only ever made to order and hand-crafted at the VOLA factory in Denmark.

VOLA's approach is defined by its attitude to durability and longevity. Its designs are timeless, but true longevity goes much deeper than how a product looks. By adhering to the original design, VOLA provides parts for every product made since 1968. There is no obsolescence with VOLA – everything is repairable, and the company only releases new products if there is a genuine need for them.

Yet VOLA products are only the beginning. The VOLA story touches all aspects of life from our homes to our public spaces, from time shared to moments experienced alone. It reaches across the generations and into the future. VOLA.



01

01 VOLA products cater to the senses, elevating the experience of everyday living.

02 The modular system of VOLA's range means parts can be replaced for every product made since 1968.



02

vola®

For more information on VOLA:
en.vola.com

All in one: Liebherr's integrated fridge and freezer

Combining energy efficiency, BioFresh engineering and the option for customization, Liebherr's integrated fridge and freezer go well beyond keeping produce fresh.

Discover the perfect fusion of style and functionality: Liebherr's integrated fridge and freezer range. In the fast-paced world of modern living, the heart of every home beats in the kitchen. It's where culinary creations come to life, families gather, and memories are made. Recognizing this pivotal role, Liebherr's meticulously designed integrated fridges and freezers present a seamless blend of innovation and elegance crafted to elevate kitchen experiences.

Sleek design, exceptional performance

Step into the realm of sophistication with Liebherr's integrated fridge and freezer range. Designed to sit behind your cabinetry, the range epitomizes understated luxury with its thoughtful interior designs. But it's not just about looks – the fridges are equipped with groundbreaking BioFresh technology, ensuring your groceries stay fresher for longer.

For a "delicatessen at home" experience every day, the IRBPh 5170 combines innovative Open Stage drawers with unique HydroBreeze technology to deliver a stunning experience of both groundbreaking freshness and peak aesthetics.

BioFresh technology: Redefining freshness

Bid farewell to food spoilage and embrace a world of freshness with Liebherr's BioFresh technology. Engineered to maintain optimal humidity levels and precise temperature control, BioFresh preserves the natural flavours and nutrients of your fruits, vegetables, and dairy products. Say hello to extended shelf life and reduced food wastage – all at the touch of a button.

Food that's frozen, not frosty

Representing efficiency and innovation, Liebherr's integrated freezers include NoFrost technology and a SoftSystem closing mechanism. This combination ensures hassle-free maintenance, eliminating manual defrosting while minimizing energy consumption and environmental impact.

Sustainability at the core

Liebherr's integrated fridge and freezer range embodies in-built sustainability. With impressive energy efficiency ratings, these appliances align with Liebherr's commitment to environmental stewardship.

A 6-star energy efficiency rating places the IRBh 5170 among the most energy-efficient fridges available anywhere – meaning no compromises between peak performance and energy consumption concerns.

Craftsmanship and innovation: the Liebherr promise

Liebherr's integrated fridge and freezer range epitomizes precision craftsmanship and innovative design.

From customizable storage options to intuitive controls, each detail is meticulously engineered to enhance the kitchen experience, setting new standards in refrigeration technology.

Experience the Liebherr difference

Embark on a journey to transform your kitchen into a culinary sanctuary with Liebherr's integrated fridge and freezer range. Discover the harmonious fusion of style and functionality – a testament to Liebherr's unwavering dedication to innovation and excellence.

Upgrade your kitchen and elevate your lifestyle with Liebherr. Experience the difference today. LIEBHERR.



01



02

01 Humidity and temperature control is optimized by BioFresh technology, which extends the shelf life of produce.

02 Without compromising on performance, Liebherr's IRBh 5170 achieves 6-star energy efficiency.

LIEBHERR

For more information on Liebherr:
home.liebherr.com.au

A different beat

MAYTREE STUDIOS





A challenging site called for unconventional thinking in this Brisbane home, which anchors living spaces around a decadent purple kitchen.

Words by Emma-Kate Wilson
Photography by Toby Scott

Colour and texture take centre stage for the perfect entertainer's abode at Same Same but Different House in suburban Brisbane. The clients approached Maytree Studios with a brief for a new home that could flex to accommodate lavish parties and provide a private retreat. The site's restrictions and council planning requirements meant the house had to be flipped from the more common north-facing orientation, resulting in a design that is "same same, but different."

Set down off the street, the house features a small courtyard that captures light through the entry, a pragmatic solution to the sloping site and south-facing orientation. Luckily, the balmy Queensland weather offers flexibility that the designers maximized with a second courtyard off the side of the kitchen – a quintessential element of indoor-outdoor living. Inviting French bistro vibes, these two courtyards are perfect for the many parties that spill out from kitchen, to living, to garden.

In the kitchen, a "working wall" is rendered in Laminex Kalamata, a moody and evocative purple hue picked out by the design-loving client. Maytree Studios has added touches of luxury in the decadent copper island bench and statement pendant light.

As a couple without children, the owners were able to compromise on elements to save space – such as a large laundry or separate living spaces. This means a monolithic working wall does all the heavy lifting, containing integrated appliances, a bar and coffee station, laundry and general household storage, plus entertaining joinery for the living room.

Beyond this, the guest bathroom peeps into sight and bookends the home, providing a visual and unexpected treat – plus an opportunity for filtered light to pour in through the louvre window. The eye-popping handmade azure tiles were chosen prior to the build and incorporated into the first design stage. Maytree Studios matched the deep hue with the paint on the walls and ceilings to create a memorable space for owners and guests alike.

Upstairs, an extravagant bath is integrated into the main bedroom, and instead of having traditional glass screens, the shower room is fully tiled, offering a sense of privacy and richness through strong colour. Though each bathroom holds its own personality, some memorable details are repeated, including vanities that read like a box suspended from the wall, moody lighting and high skirting to create presence.

Same Same but Different House embraces the clients' love of confident colour and a palette of raw yet luxurious materials to achieve a home that is at once familiar and unexpected. 🏡

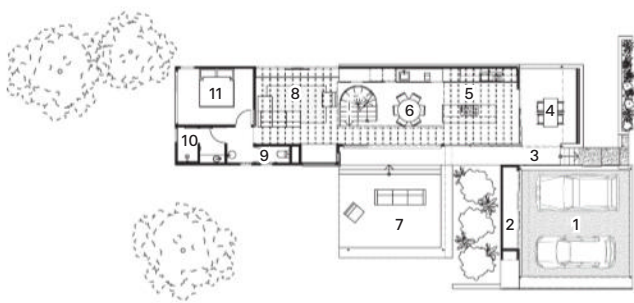
01 Deep purple joinery lines the northern wall from entry to living room, concealing fridge, pantry, bar and laundry.

02 The main bedroom and bathroom share space, maximizing access to northern light and views.

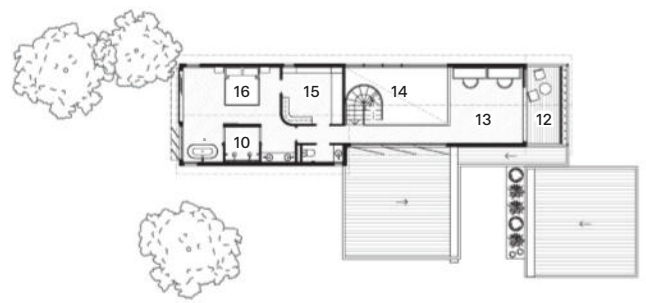


02

- | | |
|----------------|-----------------|
| 1 Carport | 9 Powder room |
| 2 Store | 10 Ensuite |
| 3 Entry | 11 Bedroom |
| 4 Patio | 12 Balcony |
| 5 Kitchen | 13 Office |
| 6 Dining | 14 Void |
| 7 Outdoor room | 15 Walk-in robe |
| 8 Living | 16 Main bedroom |

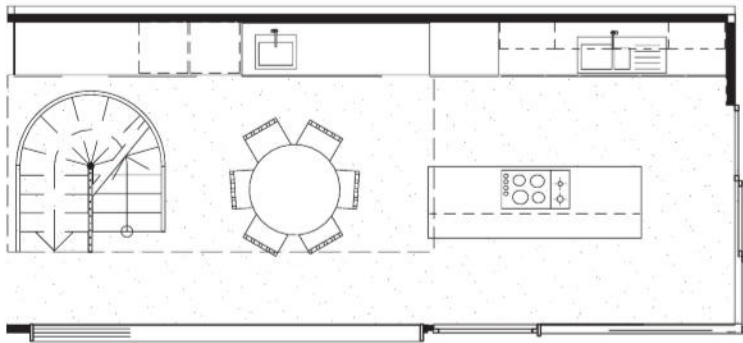


Ground floor 1:400

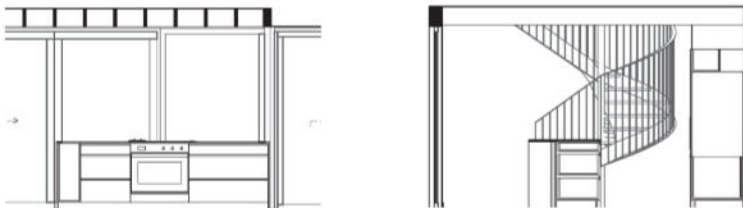
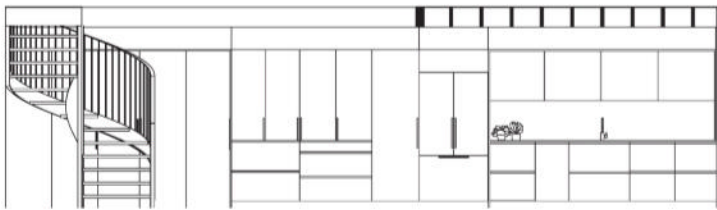


First floor 1:400

The clients' love of confident colour and a palette of raw yet luxurious materials achieves a home that is at once familiar and unexpected.



Kitchen plan 1:100



Kitchen elevations 1:100

Kitchen products

Internal walls: Dulux paint in 'White Duck Quarter'

Flooring: Concrete from Allen Brothers Constructions in 'Plain Grey' with matt topcoat honed by Grind and Seal

Joinery: Laminex splashback and drawers in 'Kalamata'; Dynamic Cabinetry joinery; aged copper sheet metal island benchtop; Sugie T5816 Hanten tile kickback from Artedomus in 'Black'; C137 finger-pull door handles from Handle House in 'Black'

Lighting: Ceiling-mounted MFL by Masson and Gypsum ribbed surface-mounted downlight from Beacon Lighting in 'White'; Lumen-8 globe lights

Sinks and tapware: Ontario double sink with strainer and Elysian mixer in 'Gunmetal' from ABI Interiors

Appliances: Fisher and Paykel integrated dishwasher, French door refrigerator and freezer, gas and induction cooktop, oven, washer and dryer

Other: Lamp shade by client; Jordan Homewares baskets

03 A copper island bench, which will patina with use, is a decadent touch.
Ceramics:
Henry Holland.

04 Large openings connect the kitchen to the outdoor room, expanding the floor area for entertaining.





05

Bathroom products (main ensuite)

Internal walls: Dulux paint in 'White Duck Quarter'; Sugie mosaic tiles (50 mm × 50 mm) by Hansen from Artedomus; porcelain skirting tiles (600 mm × 600 mm) in 'Grey' from Amber Tiles

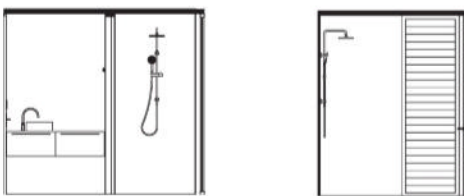
Flooring: Envy by Fyber Carpet from Carpets of Noosa in 'Denim'; porcelain tiles (600 mm × 600 mm) in 'Grey' from Amber Tiles

Joinery: Laminex HPL in 'Green Slate' with 'Natural' finish (wall-hung vanity with tight-form radius on 25 mm substrate, drawer front) and 16 mm double-sided decorative board from Dynamic Cabinetry; 600 Curve pull handle in 'Black' by Lo&Co Interiors

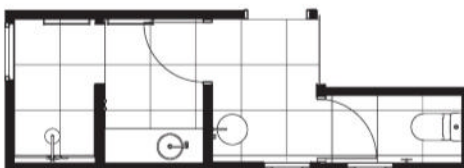
Lighting: Opal glass ball light from Fat Shack Vintage

Tapware and fittings: Milani basin hob mixer set, Dana round shower head (250 mm), Mila adjustable hand-shower holder and BP, Eden shower arm, Kobi curved hand shower, and Cali double towel rail (750 mm) from ABI Interiors in 'Gunmetal'; Brighton Groove freestanding bath tap from ATS Sydney in 'Gunmetal'

Sanitaryware: Eden bench-mount basin in 'White' from Highgrove Bathrooms; Brighton Groove 1,700 mm Fluted Oval freestanding bath from ATS Sydney in 'White'



Ensuite elevations 1:100



Ensuite and powder room plan 1:100



05 In the powder room, deep blue paint and tiles create a memorable and moody feel.

06 A change in floor material indicates the transition between the main bedroom and ensuite.

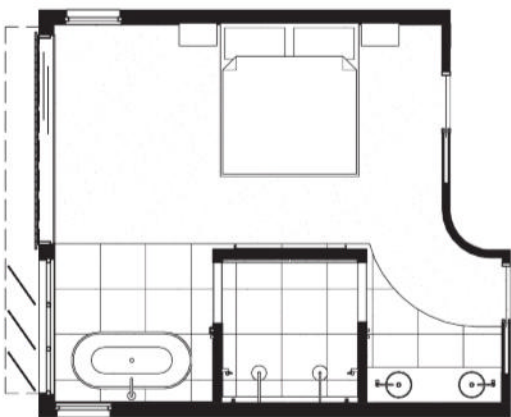
07 Green wall tiles surround the shower, contrasting the white walls of the bedroom and ensuite.



06



07



Main ensuite plan 1:100



Main ensuite elevations 1:100

Same Same But Different
is built on the land of the
Yuggera and Turrbal people.
Location
Meanjin/Brisbane, Qld

Architect
Maytree Studios
+61 7 3358 2605
hello@maytreestudios.com.au
maytreestudios.com.au

Project team Rebecca Caldwell, Kate Stafford, Alisha Bouris **Interiors and styling** Maytree Studios with Brady Sherwell **Builder** Allen Brothers Construction **Engineer** Lynskey Structural Consultants **Joinery** Dynamic Cabinetry **Landscape designer** Ecrú Studio **Building surveyor** KCV and ET Consultancy **Town planner** Jrey **Surveyor** Site Surveys

Hidden haven

FOWLER AND WARD





A surprising volume concealed within the familiar form of the terrace transforms a once-dark Melbourne home into a serene and secluded private realm.

Words by Judith Abell
Photography by Tom Ross

Single-storey terraces are Melbourne's stock-in-trade. The inability to see beyond the front facade or the roof profile means that these homes often hold architectural secrets in their backyards. With COVID-19 times and different demands on homes in the mix, it took some thinking to agree on the brief for this terrace project, but the client finally came back to the desire for a comfortable, three-bedroom home without any of the potential add-ons, such as a separate office zone. Despite its north-facing backyard, the home was quite dark inside. The decision to remain single-storey opened the way for the architect, Fowler and Ward, to play with volume in the extension via a tall, pyramid roof over the kitchen and living spaces that holds a skylight at its peak. This major move has defined many of the other smaller moves within the project.

The kitchen sits under the apex of the new ceiling, gathering the benefit of the light and volume. The inner faces of the new ceiling geometry are polished plaster, which amplifies the incoming light and highlights the precisely crafted junctions of the room. All the sizeable kitchen and living room joinery is banked along the western side of the build, allowing a lower roof on this side boundary to meet

planning requirements. Importantly, this joinery location also retains openness at the centre of the living spaces. The main kitchen benches, topped with granite, are pared-back and sit free of overhead cupboards, like pieces of furniture in the room. Eucalypt-coloured 2-pac joinery softly tones with the subtle texture of the white granite.

The new work incorporates a family bathroom and an ensuite, which are also designed to maximize a sense of generosity and light. Storage-wise, Fowler and Ward has provided a place for everything, in line with the tidy, organized nature of the clients. The family bathroom has a soft, blue-toned palette where speckled tiles merge with a terrazzo floor. A low nib wall with glazed panel above (around the bath and shower area) conceals considerable storage for all the necessary "mess" of the room. A floor-to-ceiling mirror behind the vanity and a large window maximize the sense of space in the ensuite, which has a palette of matt microcement paired with deep apricot granite over a floating 2-pac-finished vanity.

From the bathrooms through to the largest new spaces, Barkly Street House conceals a refined, luminous and generous environment behind the standard frontage of a worker's terrace. 🏡

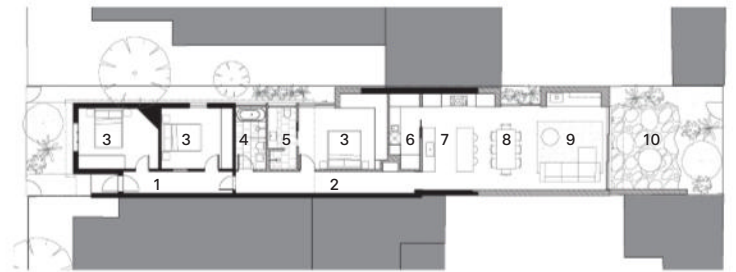


- | | |
|------------|--------------|
| 1 Entry | 6 Laundry |
| 2 Hallway | 7 Kitchen |
| 3 Bedroom | 8 Dining |
| 4 Bathroom | 9 Lounge |
| 5 Ensuite | 10 Courtyard |

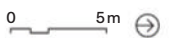
01 The project extends a single-storey terrace, providing the owners with light and privacy in an urban setting.

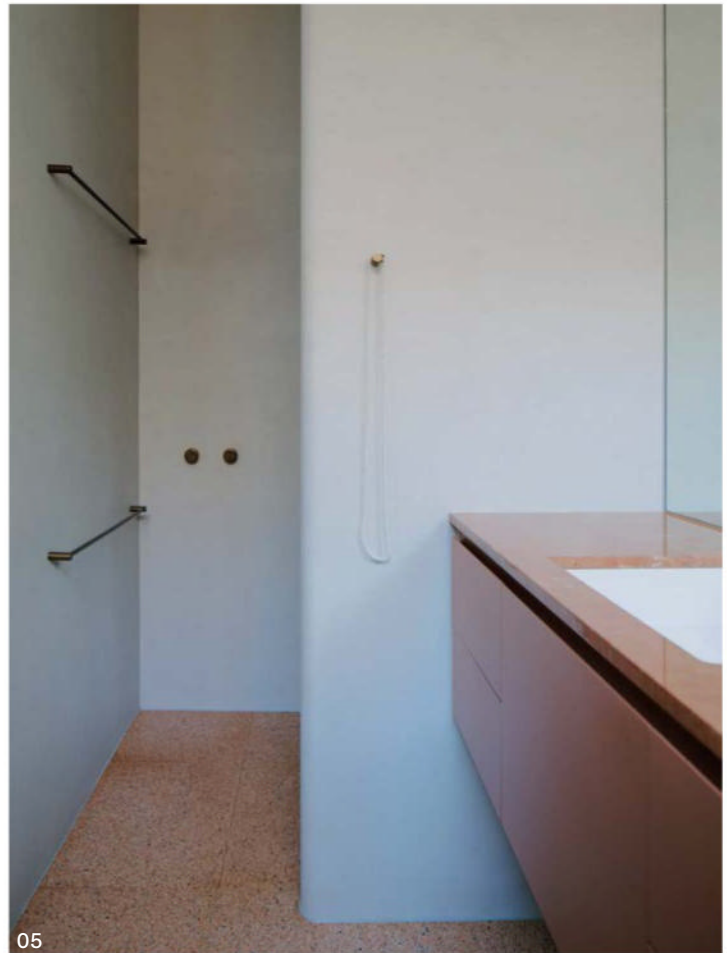
02 An asymmetric pyramidal roof in the addition adds generous volume.

03 Eucalypt-coloured joinery complements the greenery of a pocket garden.



Floor plan 1:400





Bathroom products

Internal walls: Italia Violeg terrazzo tiles from Tiento; Hida tiles from Academy Tiles; X-bond microcement in 'Aspen'

Flooring: Italia Violeg and Italia Ronuv terrazzo tiles from Tiento

Joinery: Granite benchtop from CDK Stone in 'Colonial White'; 2-pac vanity in white; Rujo Alicante stone benchtop from The Marble House; 2-pac vanity in Dulux 'Tan Wagon'

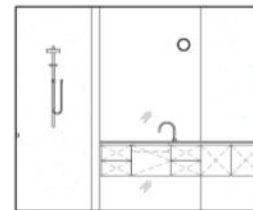
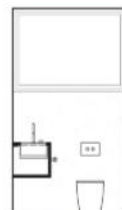
Lighting: Flos Mini Glo Ball from Euro luce

Tapware and fittings: Assemble tapware and fittings by Astra Walker in 'English Brass'; under-counter basin by Rogerseller

Sanitaryware: Classic duo bath from Kaldewei; toilet and wall flush plate by Astra Walker



Ensuite plan 1:100



Ensuite elevations 1:100

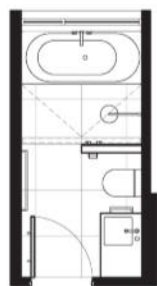
04 Apricot hues and a large floor-to-ceiling mirror add colour and functionality to the ensuite.

05 Microcement walls were selected in place of tiles and shower screen for a luxurious finish.

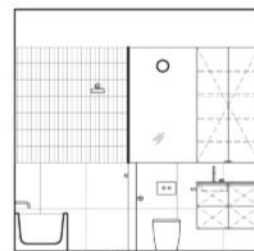
06 Neutral tones and practical design take priority in the family bathroom.



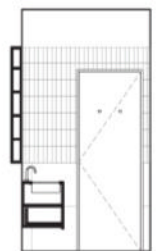
06



Bathroom plan 1:100



Bathroom elevations 1:100



07

07 A continuous 2.4-metre-high datum accentuates the lofty skylight.

08 The joinery of the kitchen and laundry extends along the western wall.



Kitchen products

Internal walls: Lightly bagged brickwork with paint finish in Dulux 'Natural White'

Flooring: Engineered oak floorboards by Made By Storey in 'Sesame'

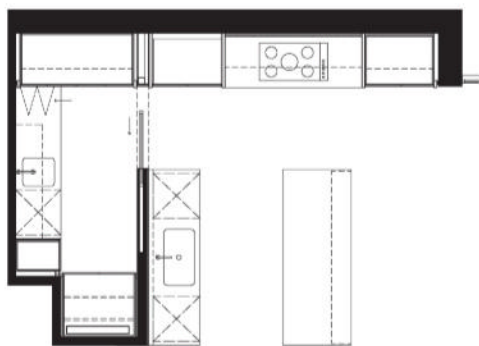
Joinery: Granite benchtop from CDK Stone in 'Colonial White'; 2-pac joinery in Dulux 'Green Fog'

Lighting: Andro XS track lights by Ambience Lighting; Dioscuri wall light from Artemide

Sinks and tapware: Icon sink mixer by Astra Walker in 'English Brass'; AFA flow single bowl undermount sink from Reece

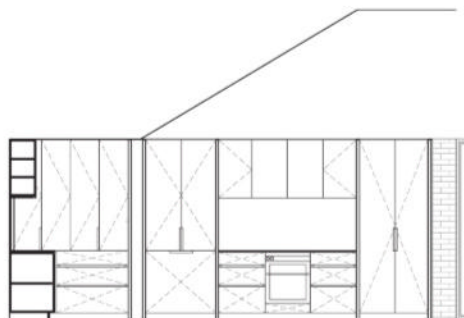
Appliances: Oven, induction cooktop and fridge from Fisher and Paykel; integrated dishwasher from Miele

08



Kitchen plan 1:100

0 2m



Kitchen elevation 1:100

Barkly Street House
is built on the land of
the Wurundjeri people.
Location Naarm/
Melbourne, Vic

Architect
Fowler and Ward
+61 3 9021 3797
hello@fowlerandward.com
fowlerandward.com

Project team Tara Ward, Jessie Fowler,
Job Gabriels **Builder** DIMPAT **Engineer**
Stantec **Joinery** Colonial Cabinets
Landscape architect Peachy Green

Timeless textures

CM STUDIO





Muted tones and tactile materiality transform a narrow Sydney terrace into an efficient and adaptable home for a growing young family.

Words by Judith Abell
Photography by Katherine Lu

This project began from a point of subtraction. The clients knew there was a wonderful view to the west from their inner-city Sydney terrace, but the existing massing of a studio, built at the end of the block, had obstructed that aspect for the main house. In removing this two-storey piece, it was logical for CM Studio to relocate the kitchen and bathroom to the new end of the dwelling to take advantage of the views and light. As part of the renovation, a first level was added to the main house within the line of the existing ridge, to accommodate two bedrooms and a bathroom.

Within the small floorplan, the service spaces work hard, particularly the kitchen. Its simple galley arrangement includes an integrated bench seat that faces the living area and returns along the lounge wall. This enables the dining table to be pushed back into the corner for daily dining (to preference living room activities), or to be pulled out into the centre of the room for larger groups. Each new piece of joinery contains storage to maximize the value of the new work to the home. Simultaneously, the service aesthetic is stripped back with concealed finger pulls and flush corners, such that the language of the kitchen is subdued and all components feel part of the living room.

Equally, the tiny bathroom on the ground floor needs to serve as both a guest facility when required, and the kids' bath space of an evening. Not wide enough for a standard bath, the space contains a custom bath with a skin of smooth microcement. This sculptural element, which is lit by a skylight, is complemented by frameless reeded glass, a wall-mounted basin and simple brushed stainless fittings.

The palette for the new work is soft, tonal and textural throughout, with travertine, quartzite, oiled oak, face brick and the warm grey of the microcement. These materials are an ideal canvas for the play of light that now streams into the house from the rear facade, with its newly revealed view, and from the stair to the first level, which is a light well to the home. ☺

01 Inspired by London terrace additions, the project is a contemporary complement to the heritage home. Artwork: Molly Miller.

02 A textured brick wall becomes a canvas for sun that streams in through a skylight.

-

0 5m

Bathroom products

Internal walls: Microcement walls and built-in bath from Ad Lucem

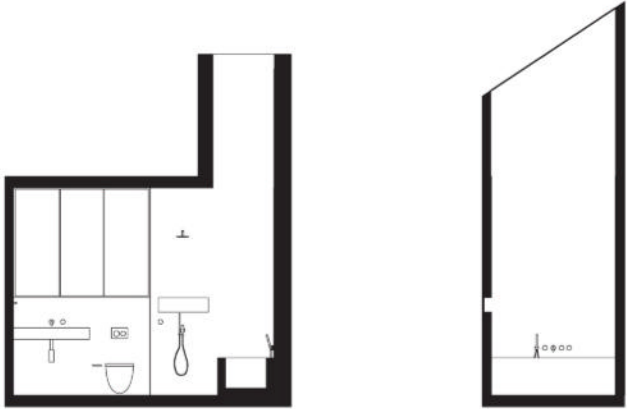
Flooring: Louisa calibrated travertine from Onsite S and D

Joinery: Brushed nickel framed shaving cabinet by Radiant Kitchens; Basin by Omvivo

Tapware and fittings: Astra Walker Icon and Assemble in 'Brushed Platinum'



Bathroom plan 1:100



Bathroom elevations 1:100



03 A calming palette of microcement surfaces, travertine and fluted glass is found in the ground-floor bathroom.

04 The custom bath maximizes space for children's bathtime.

05 Above the bath, a skylight resolves the challenge of a windowless bathroom.



05



06

Kitchen products

Internal walls: Krause Bricks from Robertson Building in 'Ghost'

Flooring: Eterno grande board from Tongue and Groove in 'Freado'

Joinery: Oak timber veneer finished with Osmo Oil; Quartzite benchtop from Euromarble

Lighting: Nemo Lampe de Marseille from Cult Design

Sinks and tapware: Assemble range by Astra Walker in 'Brushed Platinum'

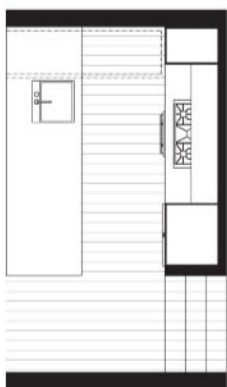
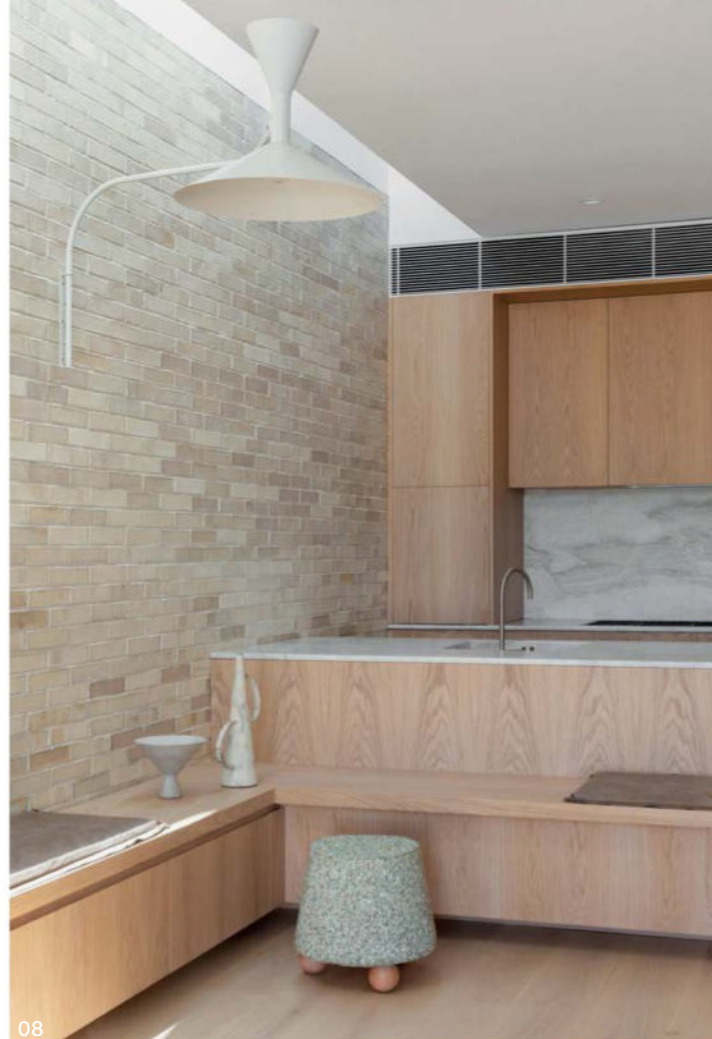
Appliances: Oven by Bertazzoni; cooktop by Barazza; rangehood by Falmec; fridge by Fisher and Paykel; dishwasher by Miele

Other: Custom oak built-in seating

06 A custom stone basin is a focal point in the galley kitchen.

07 Integrated appliances ensure the kitchen is a calm and streamlined backdrop in the compact home.

08 Built-in benches contain valuable storage and provide space-efficient dining seating.



Kitchen plan 1:100



Kitchen elevations 1:100



Darghan Terrace Glebe
is built on the land of
the Gadigal people.
Location Warrane/
Sydney, NSW

Designers
CM Studio
+61 2 9380 5791
hello@cm-studio.com.au
cm-studio.com.au

Builder Hancock Homes
Engineer NB Consulting
Joinery Radiant Kitchens
Lighting design CM Studio
Stylist Tow and Line

Cabinet of curiosities

KENNEDY NOLAN



01



Designed for a downsizing couple, this apartment in Melbourne's celebrated Fairlie Flats is reborn with brave texture and a masterful use of colour.

Words by Leanne Amodeo
Photography by Derek Swalwell

Tasked with renovating a home in one of Melbourne's most celebrated modernist apartment buildings, the team at Kennedy Nolan took inspiration from initial discussions with clients Susan and James. "They were downsizing and transitioning from a large house and garden that came with a lifetime of carefully and intelligently collected art and furniture," says Adriana Hanna, Kennedy Nolan's director of architecture. "And some outcomes of those discussions were around the specifics of domestic habitation and requirements informed and honed through previous architectural commissions, but there was also a keen exploration of thematic and conceptual matters."

Such robust thinking is befitting of the refined Regency flavour of the building, which was designed in 1961 by Yuncken, Freeman Brothers, Griffiths and Simpson and overlooks Royal Botanic Gardens Victoria. Kennedy Nolan's approach champions dynamic texture, form and colour and resulted in the creation of an interior in the manner of a *Wunderkammer* or Cabinet of Curiosities. And within this design of genuinely delightful moments of wonder, there are no two more charming spaces than the two-bedroom apartment's newly re-imagined bathroom and ensuite.

Adriana and the team were bold in their choices, with circular hand basins capturing a late-modernist mood. Each bathroom is finished in mosaic wall tiles: one of lavender, the other dark olive. Minimalist timber joinery breaks up these surfaces, and – in an unexpected flourish that highlights Kennedy Nolan's signature mastery of colour – the tapware and mirror detailing are fire-engine red.

Both rooms offer sanctuary and retreat yet are visually connected to the dining room's scheme. The red fixtures and details echo the upholstery of the Thonet Vienna Wiener Stuhl chairs, and the mosaic tiles' sequin-like effect references the colourful, abstract Adam Lee painting and amber-coloured Murano glass chandelier.

The kitchen, in contrast, is rather more subdued, although no less sophisticated. It sits at the heart of the apartment and benefits from an abundance of natural light that streams in from the glazed curtain walls. The late-modernist mood continues with a crisply clean composition that features limed American oak joinery along with benchtops and splashback in yellow travertine. There's plenty of room for storage, and the recess above the splashback even provides a clever space for smaller pieces from Susan and James's collection. It's a home of decorative expression, vibrant creativity and a sense of history treated with respect by both architects and clients. ©





03

01 Mosaic tiles wrap circular basins in a nod to the modernist era of the apartment building. Sculpture: Hans Bolling.

02 Bright red tapware and mirror detailing add a layer of vibrancy to the bathrooms. Artwork: Hermann Studios.

03 Fabric wall panels flank access to the kitchen and disguise the bar.

- | | |
|------------------------|-----------------|
| 1 Entry | 6 Ensuite |
| 2 Living | 7 Dressing |
| 3 Dining | 8 Bedroom |
| 4 Kitchen | 9 Dressing/yoga |
| 5 Guest room/
study | 10 Powder room |
| | 11 Hall |



Floor plan 1:250



It's a home of decorative expression, vibrant creativity and a sense of history treated with respect by both architects and clients.

Bathroom products

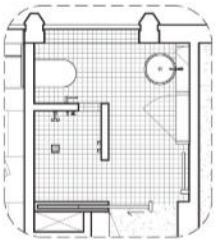
Internal walls: Vixel C6 and C28 glass tiles from Artedomus

Joinery: Lamitak laminate in Dri-matt 'Periwinkle' and 'Camel'; American oak in Feast Watson liming stain 'White'; custom mirror by Kennedy Nolan with powdercoat finish in red

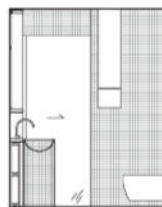
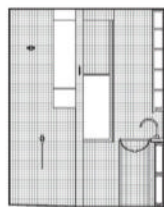
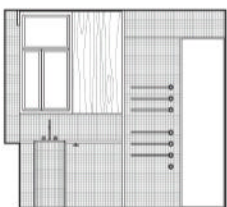
Lighting: Glass Murano vintage wall light by Carlo Nason; Flos Easy Kap from Euroluce

Tapware and fittings: Henry Wilson brass hook; Robert Gordon ceramic basin in custom colour; Vola basin mixer and heated towel rail from Mary Noall in 'Bright Red'

Sanitaryware: Pura toilet from Astra Walker in 'Creta'



Ensuite plan 1:100



Ensuite elevations 1:100

04 Details at every scale add intrigue, from the circular basins and textured materials to sculptural hooks and cabinet pulls.





05 Yellow travertine folds up from the kitchen benchtop to become a splashback and shelf. Artwork: Noel McKenna; ceramics (on shelf): Kirsten Perry.

06 American oak joinery lines the kitchen and central bench, providing ample storage.

07 A gold-toned mirror along the wall of the central bench gives the illusion of more space in a small area. Ceramic (large): Guan Wei.



Kitchen products

Internal walls: Philip Jefferies Juicy Jute II grasscloth wallpaper from The Textile Company in 'Matcha Tea'; oak lining boards by Porta in Feast Watson liming stain in 'White'; James Malone Debussy fabric wall panels from The Textile Company in 'Highland 709'; paint finish in Dulux 'Paua Shell', 'Raw Cotton' and 'Orange Wood'; Peter Meyer blinds

Flooring: Travertine Roccia from Artedomus

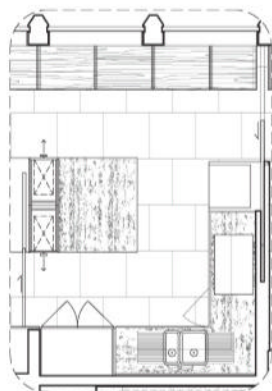
Joinery: Filled and honed yellow travertine from Artedomus; American oak in Feast Watson liming stain in 'White'; Whippet joinery pull by In-teria Goods

Lighting: Venini Modern Gold Amber Color Murano Glass Chandelier; Flos Easy Kap from Euroluce

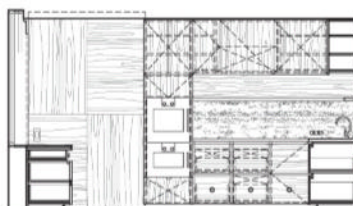
Sinks and tapware: Vola deck-mounted kitchen mixer from Mary Noall in 'Bright Red'

Appliances: 400 Series induction cooktop and fridge/freezer and 200 Series oven and combi-microwave oven from Gaggenau

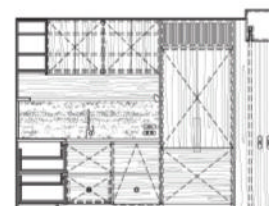
Other: Henry Wilson Gio brass hook



Kitchen plan 1:100



Kitchen elevations 1:100



08 Sliding doors at each end of the kitchen allow the space to be open to, or separated from, adjacent living spaces. Artworks (L-R): Stephen Bush, Kirsty Budge; sculpture: George and May Rumble.



Fairlie Apartment
is built on the land of
the Wurundjeri people.
Location Naarm/
Melbourne, Vic

Architect
Kennedy Nolan
+61 3 9415 8971
email@kennedynolan.com.au
kennedynolan.com.au

Project team Patrick Kennedy, Rachel Nolan,
Adriana Hanna, Elizabeth Campbell, Annie
Paxton **Builder** Comb Construction **Joinery**
Charles Sandford Woodturning and Joinery,
Grange Joinery **Lighting** Kennedy Nolan

**CRITICAL
PROVOCATIVE
DIVERSE
TRUSTED
CHALLENGING
EMPOWERING**

ARCHITECTUREAU.com

ENDORSED BY



Australian
Institute of
Architects



Design Institute of Australia



On solid ground

ROBSON RAK ARCHITECTS





This Melbourne home is graced with earthy materials, unexpected details and foliage-fringed courtyards that instil a garden connection at every turn.

Words by Leanne Amodeo
Photography by Mark Roper

When Kathryn Robson and Chris Rak were engaged to craft a quiet oasis in the heart of Melbourne's inner-eastern suburbs, they soon realized that the existing residence on the site was ill-suited to their clients' brief. Knocking down that mock-Victorian house let Kathryn and Chris, who founded Melbourne-based studio Robson Rak, meet the brief with a contemporary new two-level that is rich in materiality and striking in its connection to the outdoors.

"Materials have been used in surprising ways to bring elements of the home to life," says Kathryn. "And we've reimagined them, creating a multi-layered, tactile space that reflects the environment and underpins a deep connection with nature." In the home's upstairs bathroom and ensuite and the downstairs powder room, a light and bright scheme of natural-coloured terrazzo, pale timber cabinetry and fluted glass embodies a high-end aesthetic yet is completely relaxed. The Art Nouveau-style mirrors add an unexpected design flourish, and the walk-in robe stunningly reveals the ensuite. Each of these rooms evokes the feeling of being in a contemporary spa retreat – Kathryn and Chris were deliberate in instilling a sense of calm and wellbeing.

This feeling extends to the kitchen, where the palette of brick, polished plaster, timber and terracotta gracefully coalesces. And just like the bathrooms, the kitchen hosts surprising design elements that add to the richness of the material palette. As Chris explains, "The island has been raised, and the terracotta floor runs underneath, while the marble benchtop travels down to form 'feet.' We designed a steel wall sculpture, which allows foliage to grow, weaving a tapestry of green that separates the kitchen from the dining area. And the textured brick used for the internal walls is also used as a base kicker underneath the joinery, creating another unexpected detail."

The terracotta floor tiles bring a distinct European quality to the overall design, and this kitchen would not look out of place in a modern apartment in the heart of Barcelona. However, its strong connection to the outdoors via generous windows above the sink and bench firmly embeds it within its Australian context. The clients and their family can sit at the island's breakfast bar and look into the backyard through full-height sliding glass doors: just one example of Kathryn and Chris' commitment to creating warm, welcoming spaces that make people feel good about themselves and their home. 🌿

01 Fluted glass diffuses light into the shower and presents a soft view to the ensuite from the walk-in robe.

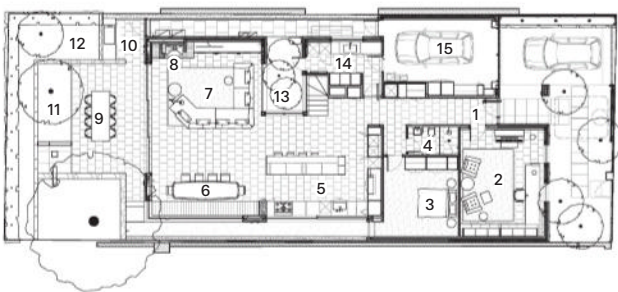
02 Repetitive rectangular cut outs unify the vanity, mirror and shower.

03 A sculptural steel planter delineates kitchen and dining. Sculptures: Chris Rak; ceramics: Mali Taylor.



03

- | | |
|--------------------|---------------------|
| 1 Entry | 13 Atrium garden |
| 2 Library | 14 Laundry |
| 3 Bedroom | 15 Garage |
| 4 Powder room | 16 Walk-in robe |
| 5 Kitchen | 17 Ensuite |
| 6 Dining | 18 Bathroom |
| 7 Living | 19 Study |
| 8 Fireplace | 20 Rooftop garden |
| 9 Outdoor dining | 21 External terrace |
| 10 Barbecue | 22 Stairs |
| 11 Pond | 23 Ballast roof |
| 12 Raised planters | |



Ground floor 1:400

0 5m ↺



First floor 1:400



Bathroom products

Internal walls: Marmorino polished plaster by San Marco Deco in custom colour

Flooring: Neues Grey terrazzo tiles from Fibonacci

Joinery: Blackbutt timber veneer; Artedomus Grigio Orsola vanity edge; custom basin in Neues Grey terrazzo from Fibonacc

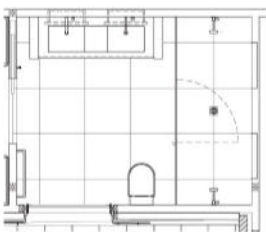
Lighting: Anchor Ceramics Flute wall light from Mobilia

Tapware and fittings: Astra Walker Icon+ Lever tapware and shower fittings

Sanitaryware: Apaier Sublime bath, Villeroy and Boch toilets, custom stone basins

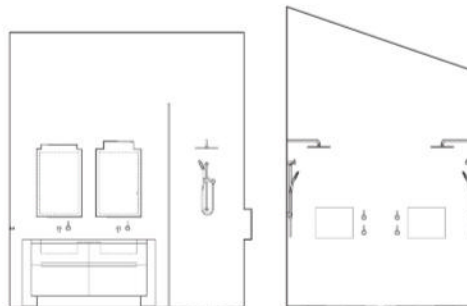
04 The powder room includes a custom stone-and-terrazzo basin. Ceramics: Joana Partyka.

05 In the ensuite, a terrazzo basin paired with Art Nouveau-style mirrors creates a spa-like setting. Vase: Lucy Folk.



Ensuite plan 1:100

0 2m

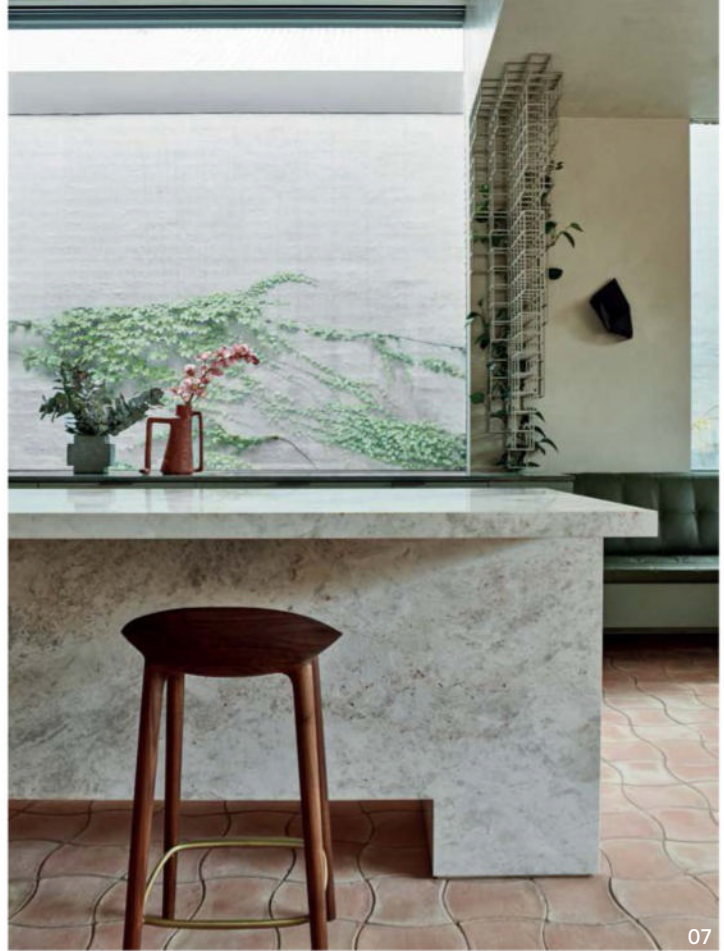


Ensuite elevations 1:100



0 2m





Kitchen products

Internal walls: Marmorino polished plaster by San Marco Deco in custom colour

Flooring: Lola terracotta tiles from Tiento Tiles

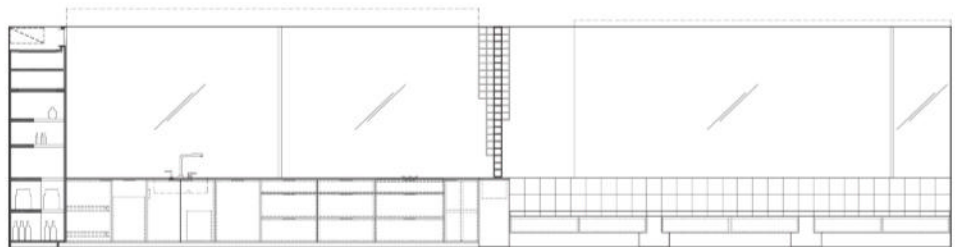
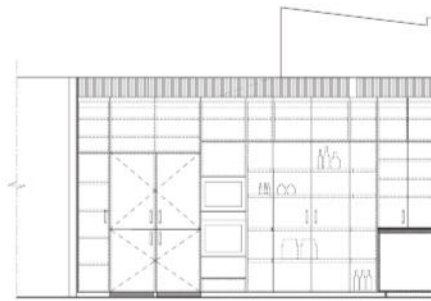
Joinery: Painted timber veneer panelling and solid timber black-butt battens by District Joinery; custom leather upholstery by InForm; natural stone slabs from Signorino (Tugela), Artedomus (Grigio Orsola) and G-Lux (Nexus Marble); Jolie Anvil cabinet handles from Design Precinct; Blum hinges, drawers and inserts

Lighting: Reggiani Yori spotlights from Euroluce

Sinks and tapware: Blanco Subline 7-UL sink in 'Anthracite'; Astra Walker kitchen spout with Icon+ Lever hob mixer

Appliances: Miele induction cooktop, downdraft, integrated dishwasher, fully integrated fridge/freezer, ovens and warming drawer

Other: Custom dining table by Lowe Furniture; Miyazaki Sail dining chairs from Apato; counter stools from Great Dane



Kitchen elevations 1:100

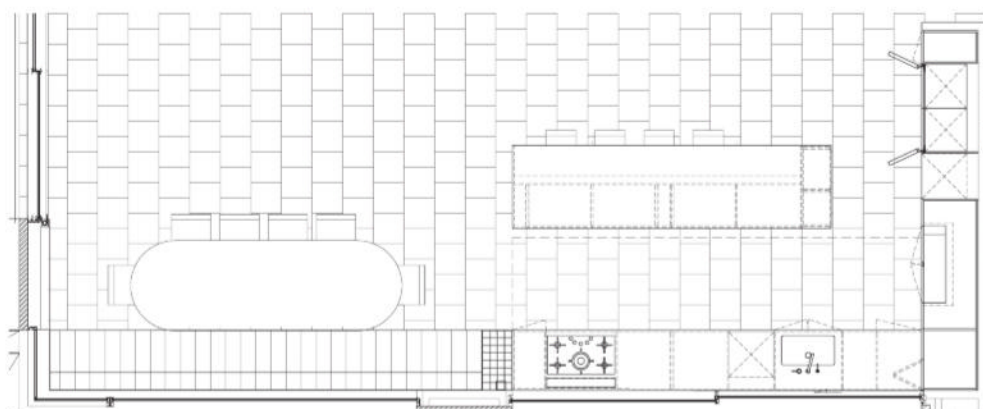
0 2m



06 Natural materials such as terracotta tiles, solid timber and marble will age over time. Artwork: Chris Connell.

07 The marble island bench is designed as a sculptural object, with voids for seating and continuous tiling. Vases (L-R): Sharon Alpre, Daniel Leone.

08 A flush induction cooktop allows for an uninterrupted kitchen benchtop that overlooks the growing garden.



Kitchen plan 1:100

0 2m ↻

Terra Firma is built on the land of the Wurundjeri people.
Location Naarm/ Melbourne, Vic

Architect
Robson Rak Architects
+61 3 9079 1860
studio@robsonrak.com.au
robsonrak.com.au

Project team Kathryn Robson, Chris Rak, Navid Varzaghani
Builder LBA Construction
Engineer Ipsum Structures
Joinery Distinct Joinery
Landscape designer Mud Office
Lighting Robson Rak Architects

Extending legacy

WILLIAMS BURTON LEOPARDI





Longevity and soft luxury lead the design decisions of this home in Adelaide, once occupied by the owner's grandfather.

Words by Emma-Kate Wilson
Photography by Caroline Cameron

Millswood Residence is a family home that has been handed down through generations. In the latest reworking of this Adelaide residence, Williams Burton Leopardi pays homage to the heritage shed vernacular, honouring light and simplicity through a series of new pavilions.

The former kitchen was a dark, enclosed, museum-like space with an old wood-burning oven and an adjoining living area, a laundry and a toilet. Tasked with reinventing the space, the designers chose muted tones and textured materials to help enhance the building's scale.

The notion of "shed as muse" is evident in the addition's overhead pitched beams, while the skylights that punch through the lofted ceiling provide a sense of expansion. "When you're in the kitchen, you have the option to look up to the sky, out to the landscaping or to the creek that runs alongside the property – we wanted to frame views that captured that connection to place," says Williams Burton Leopardi director David Burton. "The exterior forms reflect a lot of light, especially in the morning, creating an interesting play of shadows throughout the day."

Bringing a legacy of the original into the new, the kitchen incorporates individual, furniture-like pieces, with functionality hidden away. "We wanted to combine fitted and unfitted forms within the kitchen. We used laminate to form the base joinery and fronts, with an integrated linear finger-pull detail in oak that accentuates the full-height storage wall," explains director Sophia Leopardi. "Concrete forms a custom benchtop, turning upward along the rear wall to create the splashback. As almost-separate modules, the overhead units sit as their own entities while the flanking full-height wall of joinery integrates key storage as an extension of the architecture."

A display shelf to one side of the range hood is made from a fine, perforated steel that echoes the home's external materiality. In a subtle touch, this element is repeated in the base of the island bench.

The concrete floor continues into the guest bathroom, a consistency that adds to the home's simplicity. Natural stone tiles line the rear wall to form the splashback, complementing a contemporary wall-hung basin and handmade wall lights. In the family bathroom, plantation shutters create dappled light, continuing the narrative of shadow play.

Millswood Residence is anchored by its crisp, clean colour palette, which carries from the exterior to the interior. Simplicity and repetition of form and material continue the rhythm of holistic design. Here, architecture and interiors enjoy a subtle interplay; the kitchen and bathrooms reveal the magic of a home filled with intimate details. ©

01 Exposed beams and a raked ceiling maximize light and volume while nodding to the internal space of a shed.

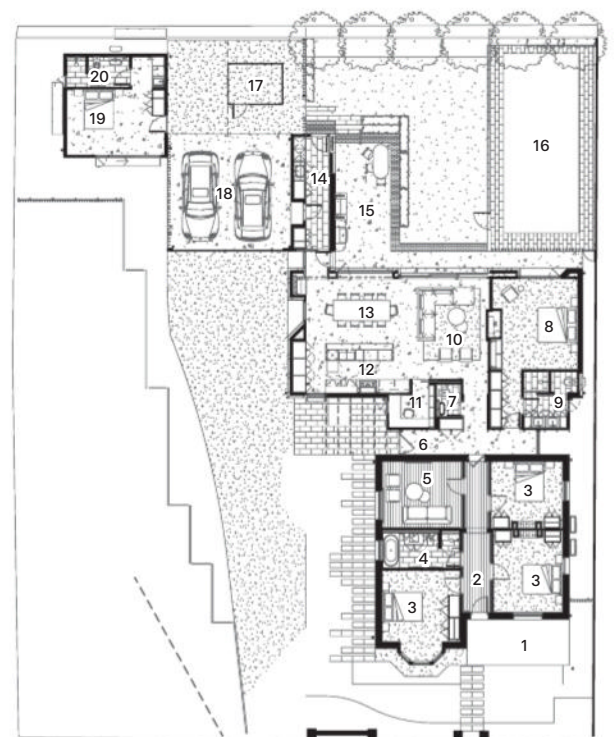
02 A functional layout and simple detailing create an efficient and elegant kitchen. Ceramics (L-R): Ebony Heidenreich, Ashlee Hopkins.

03 Connecting to the external entertaining area, the kitchen cleverly optimizes the northern aspect. Ceramic (middle): Connie Agoustinos.

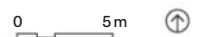


03

- | | |
|----------------|-------------------------|
| 1 Porch | 12 Kitchen |
| 2 Hallway | 13 Dining |
| 3 Bedroom | 14 Laundry |
| 4 Bathroom | 15 Outdoor entertaining |
| 5 Sitting | 16 Pool |
| 6 Link | 17 Service yard |
| 7 Powder room | 18 Carport |
| 8 Main bedroom | 19 Guest bedroom |
| 9 Main ensuite | 20 Guest ensuite |
| 10 Living | |
| 11 Study | |



Floor plan 1:400





**Bathroom and
powder room products:**

Internal walls: C13 and K69300 tiles from Eco Tile Factory in 'White Matt'; honed Carrara tile from International Ceramics; paint in Dulux 'White Duck Quarter'

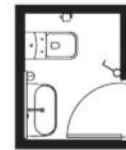
Flooring: Honed Carrara tile from International Ceramics

Joinery: Caesarstone engineered stone in 'Fresh Concrete'; American white oak timber veneer

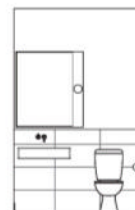
Lighting: Flos Mini Glo-Ball Wall Light from Transforma

Tapware and fittings: Bettelux bath, Soul 2 and Synthesis 70 wall basin by Studio Bagno in 'Gloss White' and Astra Walker Icon wall sets in 'Urban Brass' and 'Brushed Platinum' from The Source

Sanitaryware: Toilet from Caroma



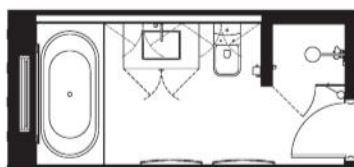
Powder room plan 1:100



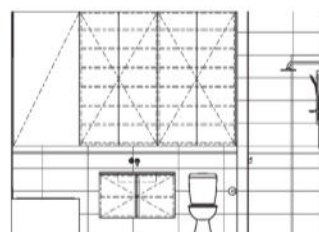
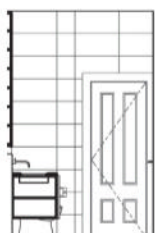
Powder room elevations 1:100

04 In the compact powder room, hand towels can hug the basin's curved rail. Ceramics (L-R): Minaal Lawn, Michelle Kelly.

05 Similar handle details are repeated in the bathroom joinery with a warm American white oak timber veneer.



Bathroom plan 1:100



Bathroom elevations 1:100



05

Kitchen products

Internal walls: Painted in Dulux 'White Duck Quarter'

Flooring: Polished concrete by Premix Concrete SA in platinum finish

Joinery: Formed concrete benchtop with honed finish in 'White'; 2-pac joinery in Dulux 'Natural White'; American white oak timber veneer joinery leg, shelf and handles; perforated steel from Locker Group powder-coated in Duratec 'Eternity' and 'Eternity Linen Pearl'

Lighting: Unios Titanium surface-mounted light from Hi Lighting

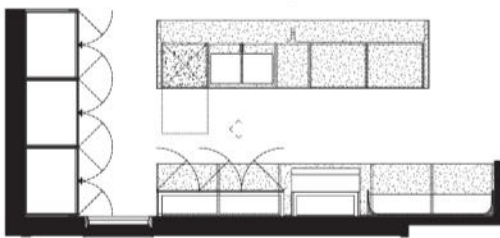
Sinks and tapware: Oliveri Spectra double bowl in 'Gunmetal' and Zip Hydro tap in 'Brushed Gold' from The Source

Appliances: Smeg oven and cooktop; Fisher and Paykel integrated French door fridge; Miele integrated dishwasher; Falmec rangehood

Other: Bok oak dining table by Ethnicraft from Terrace Flooring; Liz dining chair from Estilo Furniture in 'Toffee'; Snow stool from Agostino and Brown; Spiralled Vessel Square 1 by Connie Augoustinos; Sage large-footed platter from Jam Factory

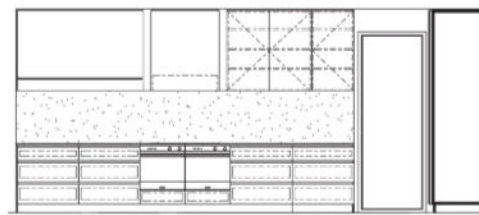


06

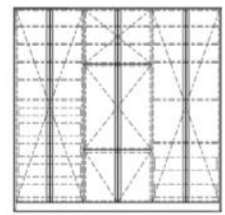


Kitchen plan 1:100

0 2m



Kitchen elevations 1:100

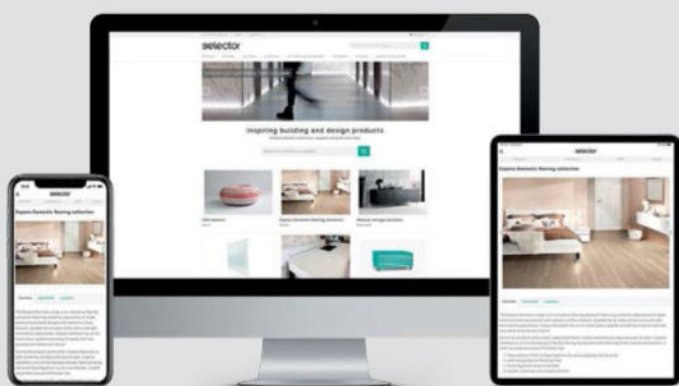


06 The overhead cupboards, shelf and island bench are designed to be seen as individual pieces rather than built-in elements.

Millwood Residence is built on the land of the Kaurna people.
Location Tarndanya/ Adelaide, SA

Architect
Williams Burton Leopardi
+61 8 8223 1177
wb@designbywbl.com.au
designbywbl.com.au

Project team David Burton, Sophia Leopardi, Erin Crowden, Emma Aronsten
Builder Cirocco Constructions
Engineer Gama Consulting
Joinery Gap Joinery
Metalwork Southern Stainless Fabrications
Landscape design Lee Gray Landscape Design
Styling Williams Burton Leopardi



selector

Find what you need for your next project.
Inspiring building and design products.

Sign up to the e-newsletter **Selector.com**



Supplier index



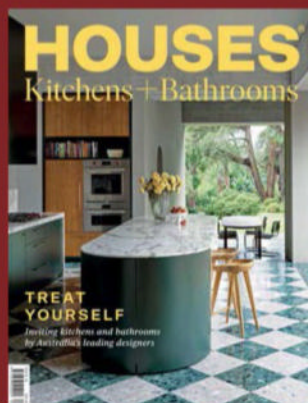
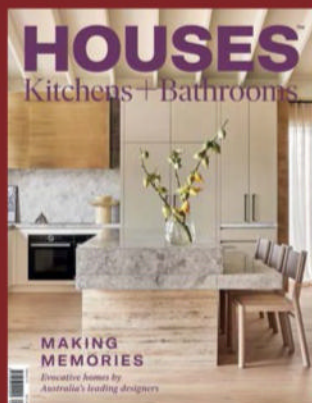
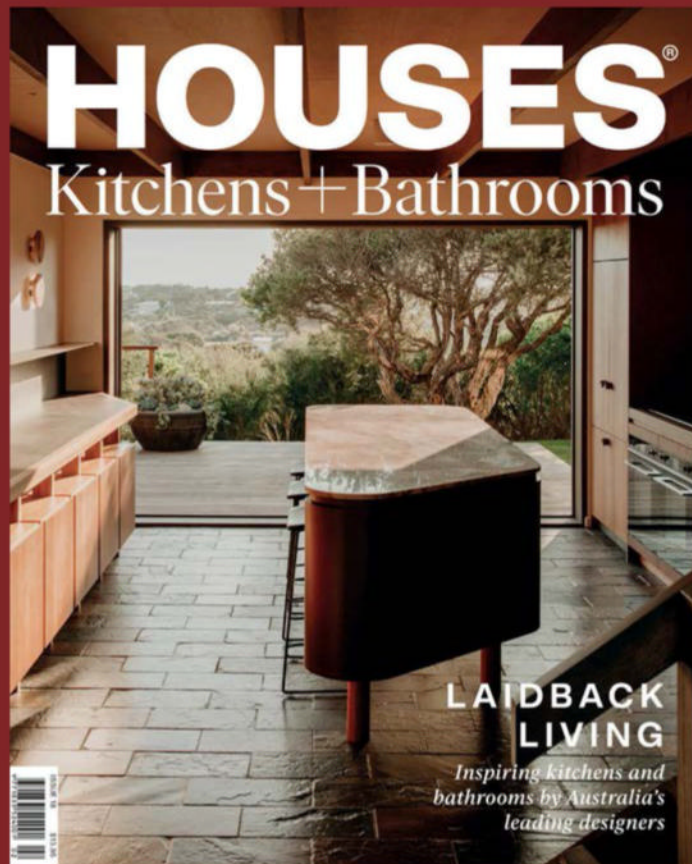
Supplier index

BLUM blum.com	ROCA roca.com.au
ELTON GROUP eltongroup.com	SANIFLO saniflo.com.au
LIEBHERR home.liebherr.com.au	STORMTECH stormtech.com.au
OLIVERI oliveri.com.au	SUB-ZERO AND WOLF subzero-wolf.com.au
PHOENIX TAPWARE phoenixtapware.com.au	THE ENGLISH TAPWARE COMPANY englishtapware.com.au
POLIFORM poliformaustralia.com.au	VOLA vola.com

Useful resources

ARCHITECTUREAU architectureau.com Stay up-to-date with news, views, events, products and projects across architecture, interiors and landscape architecture in Australia.	AWARD-WINNING HOUSES housesawards.com.au Visit the Houses Awards website and browse the gallery to view some of Australia's most outstanding houses, kitchens and bathrooms.
ARCHITECTURAL PRODUCT NEWS productnews.com.au Discover architectural products and industry news, then use the convenient one-click buttons to enquire directly with suppliers.	THE AUSTRALIAN INSTITUTE OF ARCHITECTS architecture.com.au Search this website to find architects in your area, and learn more about engaging their services.
SELECTOR selector.com Find residential products for your next project from leading suppliers and manufacturers – the easy way.	DESIGN INSTITUTE OF AUSTRALIA design.org.au Connect to a designer and get project advice or direction with this online referral service.

More brilliant ideas for your kitchen and bathroom



Complete the set.

Order your print copy at architecturemedia.com/store



Poliform